

**A Message from the President**

Late in 1996, SEAOC developed a strategic plan that was intended to guide the activities of the Association for a number of years. This document was the first time such a formal plan and document had been developed in the sixty year history of SEAOC. While this document has served the Association well, the rapid changes that face our profession and our members have made this document less than current, and in some ways obsolete. As a result, SEAOC President Bob Hendershot has initiated an effort to update (or more realistically rewrite) the Strategic Plan for the Association.

An initial planning session for this effort was held in October 2000. This initial session identified a number of areas of interest that will be addressed in the new strategic plan. These areas included the following:

- Enhancing the image of the structural engineering profession in society,
- Keeping pace with the changing face of building code and standards development on the local, regional, statewide and national bases,
- Enhancing of the business management skills of members and their firms,
- Increasing the value of membership in the Association,
- Enhancing the technical competence of our members and profession,
- Meeting the needs of our younger members,
- Increasing our membership base,
- Improving our relations and influence with government agencies and bodies,
- Participating in the process of changes to licensing procedures.

Given this list of topics, it is clear that there is much work to be done to develop this critically important document that will guide the activities of SEAOC in the coming years.

A two-day strategic planning session has been scheduled for late February to discuss the issues listed above (as well as a number of others). This session will

*Continued on Page 2*

**January Program**

**DESIGN AND CONSTRUCTION OF THE AIRTRAIN SYSTEM AT THE SAN FRANCISCO INTERNATIONAL TERMINAL**

**Joint Meeting with the American Concrete Institute**

*by Jamison Curry, Program Chair*

January's program should prove to be a moving experience. We will be joined by members of the American Concrete Institute to hear speakers Bruce Barnett of Adtranz and Anthony Powers of HDR Engineering, USA. They will be presenting a description of the new AirTrain System at San Francisco International Airport (SFO). This system is an automated guideway transit system (or "people mover") for transportation in the near proximity of the airport. AirTrain, with 9 stations, will link to the new BART extension into SFO, at its Concourse H/ North Parking Garage Station. AirTrain will also link the new international terminal, with the other existing terminals, a new maintenance facility, the new rental car facility and the south parking garage. A station is being planned for a future on-site hotel. Extensions are also planned to the north of the airport.

Mr. Barnett, whose company is providing the train system, will speak about the project in general. The project was awarded on March 5, 1998 to Adtranz by SFO's Board of Commissioners. He will also speak about some of the other projects that Adtranz has worked on.

Bruce Barnett has been with Adtranz since 1980 and has extensive work experience in North America, Mexico and

parts of the Pacific Rim. Adtranz is a world leader in applying automated transit system technology, having reliably transported millions of passengers over the past 25 years. Adtranz is a Daimler-Chrysler Corporation, and is being acquired by Bombardier.

Mr. Powers, whose company provided engineering services for the project, will speak about the engineering aspects of the project. One of the interesting features is the seismic joint between portions of elevated track. The joint, which has been shop-tested, is expected to be able to open or close up to 3'-0", rotate 4.5 degrees and be easily repaired, to allow the system to be running immediately after a minor earthquake and within a short time after a major earthquake.

Anthony Powers is a Senior Bridge Engineer with HDR Engineering in Folsom, California. He has been with HDR since 1989, and has worked with Adtranz on projects in Denver, Tampa and Kuala Lumpur, as well as San Francisco. He is an active member in ACI National and is a member of Committees E 701 - Materials for Concrete Construction, 124 - Concrete Aesthetics, and 341 - Earthquake-Resistant Concrete Bridges. HDR is ranked #28 in the 2000 Engineering News-Record top 500 Design Firms rankings.

**Meeting Notice**

**Tuesday, January 2, 2001**

Assembly	5:45
Dinner	6:30
Program	7:30

**The City Club**

*155 Sansome Street, 10th Floor  
San Francisco*

Fax registration form on the back of this newsletter to the SEAONC office by **12 noon Wednesday, Dec 27, 2000**

**Seminar Information, page 5**

**SEAONC 2001 Spring Seminar  
Topic: Foundations**

March 14 & 21, 2001  
PG&E Auditorium  
245 Market Street, San Francisco

*Continued from Page 1*

develop the issues in detail and develop action plans for the various items. The completed Strategic Plan will be distributed to the SEAOC Board for approval at their meeting next May.

Representatives of each regional association will participate in the two-day session. SEAONC's representatives will include SEAONC Vice President Jon Kiland, SEAOC Past President Ron Hamburger, Past Chair of SEAONC's Young Members Forum Suzanne Brown, and myself. In addition, the SEAONC Board will be discussing the Strategic Planning session at both our January and February meetings. Any member of the Board or the participants in the strategic planning process would welcome your thoughts and comments on the strategic issues that face SEAOC. Your input would help us to ensure that we correctly reflect the needs of SEAONC members, so please don't hesitate to call or send an e-mail.

### **SEAONC Speakers' Forum in Full Swing**

As you may recall, this year the Public Affairs and Membership Committee has initiated an outreach program to provide speakers to describe and discuss the challenges of a career in structural engineering. The targeted audiences are students in middle and high school, through presentations at annual "Career Days", or within the curricula of a science or math class. The committee has developed a very informative and comprehensive PowerPoint presentation to assist the speakers. I am very pleased to tell you that this program is well underway with a large number of local schools already contacted, and over a dozen expressing interest in the program. The committee would like to continue to add to this list in the early part of next year. So, if you grew up in the area and would be interested in making a presentation at your alma mater (for example, I am going to give the presentation at my high school in February), or your local school(s), please contact Andrew Scott or Roger Parra at 415/392-6952. I hope that as many of you as possible will be able to find a few "extra" hours of your time to participate. I believe that you would find it to be a very worthwhile effort to expose a number of young people to our profession. What a great feeling it would be if, at each of these presentations, we could convince even one young person to consider our profession for their career.

**- James Malley, President**

### **SIGNING AND SEALING LANGUAGE CLARIFIED**

The Board for Professional Engineers and Land Surveyors (BPELS) recently proposed legislative language to clarify when and how a professional engineer must sign and seal plans. Senator Liz Figueroa (D-Fremont) amended the language into the Board's sunset extension bill-SB 2030. Governor Davis signed the bill and the new language will take effect Jan. 1, 2001.

As currently written, the Professional Engineers Act requires all plans prepared by an engineer or by a subordinate to be signed by the professional engineer with responsibility for them. The amended language—which applies to all civil (including structural and geotechnical), mechanical and electrical engineering plans—more clearly spells out when a professional engineer must sign and seal plans:

- All plans, calculations, specifications, and reports must include the P.E.'s license number.
- Interim documents must include a notation as to the intended purpose of the document (i.e., "preliminary," "not for construction," "for plan check only," or "for review only").
- All plans that are permitted or that are to be released for construction, and all final calculations and reports, must bear the signature and seal or stamp of the P.E. and the expiration date of the certificate or authority.
- If plans that are required to be signed and stamped or sealed have multiple sheets, the signature, seal or stamp, date of signing and sealing or stamping, and expiration date of the certificate or authority must appear on each sheet of the plans.
- If specifications, calculations, and reports are required to be signed and sealed or stamped and have multiple pages, the signature, seal or stamp, date of signing and sealing or stamping, and expiration date of the certificate or authority shall appear at a minimum on the title sheet, cover sheet, or signature sheet.

To read the language in its entirety (Section 6735 of the Business and Professions Code), go to [www.leginfo.ca.gov/](http://www.leginfo.ca.gov/).

### **199 FREMONT STREET, SAN FRANCISCO**

*by Jamison Curry, Program Chair*

Thanks to David Hobstetter (Kaplan McLaughlin Diaz) and Stephen K. Harris (EQE International), our December speakers, for their presentation of the design services provided for 199 Fremont Street. For those of you who missed the meeting, the following article outlines some of the highlights.

Design of the 29-story office tower, which was initially begun in the economic doldrums of 1991, had several fits and starts, before serious design development began in January 1998. Steel was bid in May 1998 and steel erection began about a year later, in June of 1999. Beneficial occupancy was provided in May 2000.

The superstructure, which is a steel special moment resisting frame/eccentrically braced frame core, dual system was designed to have a Probable Maximum Loss of 15 percent or less in a major earthquake. The joints in the special moment resisting frame, which were tested by Smith-Emery in Los Angeles, were stiffened, welded joints. The joints, as tested, were capable of developing 3.9 percent rotation with only 5 percent degradation in stiffness.

Earthquake loads controlled the lateral force design, but wind loads were also studied in wind-tunnel tests, performed by Hart Consultant Group in Santa Monica. It was found that wind loads were generally at, or below, UBC Exposure B wind load levels. Fundamental periods of vibration are 4.15 seconds in the x-direction axis of the structure and 3.1 seconds in the y-direction axis. Story drifts were limited to 1.5 percent of the story heights.

The foundation is a six-foot thick mat foundation. The foundation, which is below three basement levels, bears on dense sand of the Colma formation and eliminates the need for driven piles. The 42-foot deep foundation excavation was protected by a soil-cement column shoring wall.

Opinions expressed in the SEAONC NEWS are not necessarily those of the Structural Engineers Association of Northern California. Advertising rates and information sent upon request. Acceptance of advertising and informational brochures in the SEAONC NEWS does not constitute endorsement or approval by SEAONC of the products or services advertised. SEAONC reserves the right to refuse any advertising.

The SEAONC NEWS is published monthly by the Structural Engineers Association of Northern California, 74 New Montgomery Street, Suite 230, San Francisco, CA 94105-3411. It is distributed to members of SEAONC as a membership benefit. Reproduction for noncommercial purposes is allowed if the source is acknowledged.

**EDWARD A. CEDERBORG**

*by David L. Messinger, Life Member SE, and Daniel Shapiro, Honorary Member SEAONC Life Member SE, Edward A. Cederborg passed away November 8, 2000 after a long and valiant struggle with a rare blood disease.*

Ed was born in Berkeley on January 1, 1922, and was one of four children born to Helma and Axel Cederborg. Ed lived in Oakland most of his life, where he was active in Boy Scouts, backpacking in the Sierras and Yosemite. He graduated from Oakland High School in 1939, and then attended North Park College in Chicago, where he met his wife of 54 years, Jean.

On December 8, 1941, the day after the fateful bombing of Pearl Harbor, Ed volunteered for service in the US Navy and was enrolled in the V12 program at UC Berkeley. He graduated in Civil

Engineering in October 1943, and was commissioned and served in the Seabees in the Pacific where he was involved in building and designing pontoon vehicles, causeways for LSTs and barges, first in Hawaii and then in the South sea island of Tulagi. From here came orders to invade Okinawa in April of 1945. He stayed in Okinawa two months when the island was won, and was on his way to the invasion of Japan when the war ended. Upon returning home in 1946, Ed married his fiancée, Jean in November 1946.

Ed worked in construction for two years, then for John Blume, and then joined the Bechtel Corporation Power Division where he spent the rest of his career as a project engineer and project manager until retirement in 1985.

A highlight for Ed in the past year was a tribute given by the Piedmont Historical Society to his father, Axel, who had been a prominent builder in the area 65 years

before. Ed worked diligently to assemble photographs of his father's houses, and was extremely proud of his father's work. Ed also taught engineering classes at UC Extension, and was a member of ASCE. He joined SEAONC in 1952 and was sponsored by John Sardis, John Blume and Walter Dickey.

Ed was a member of the First Covenant Church of Oakland, and is survived by his wife, Jean, daughter Debbie Jewell, granddaughter Britta, brother Chester Cederborg and sisters Esther Schick and Marilyn Anderson. He brightened the lives of everyone who knew him.

A memorial service was held at his church on November 14, 2000. The family requests that any donations be made to the First Covenant Church, 4000 Redwood Road, Oakland, CA 94619 or the Blood Research Institute, 3023 Summit Street, Suite 200, Oakland CA 94609.

**SEAOC SALARY SURVEY**

SEAOC invites all member firms to participate in the SEAOC Salary Survey!

On January 7th SEAOC will be e-mailing a Salary Survey directly to all firms who participated last year. Members who did not participate last year can get the forms and instructions directly from the SEAOC web site [www.seaoc.org](http://www.seaoc.org) or [ftp.cpceng.com/outgoing/SEAOCSalarySurvey](http://ftp.cpceng.com/outgoing/SEAOCSalarySurvey).

**CONTINUING PROFESSIONAL ENGINEERING EDUCATION  
PROFESSIONAL ENGINEER (CIVIL) LICENSE SEMINAR - San Jose, CA**

Saturdays, February 3 - April 7, 2001 C.V. Chelapati, Ph.D., P.E., Director Course No. CPEE 720

CPEE is offering its famed P.E. (Civil) seminars nationwide in major metropolitan areas. These seminars have been offered since 1973 and perhaps largest of its kind in U.S. All major subjects of Civil Engineering are covered. Individual sessions in the seminar are taught by expert Practitioner/Scholars who are proficient both in theory and current practice. This 9 week, 54 hour seminar fee of \$1,195.00 includes a set of six volumes of P.E. (Civil) License Review Manuals and supplements developed for the seminars by PEDP, Inc.

Instructional Materials: P.E. (Civil) License Manuals - Volumes I, II, IV, VI, VII and VIII, sixth edition by PEDP valued at over \$335.00  
Location: San Jose State University  
One Washington Square, San Jose, CA 95192-0083

**Advanced "Intent to register":**

Please visit our website and send us an e-mail to express your intent to register as soon as you can. A minimum of 15 registrants are needed to conduct the seminar. Please register early and receive your manuals.

**Registration Policies and Information:**

1. Manuals will be shipped by UPS during the second week before the classes begin. Books cannot be shipped to P.O. Boxes and a signature is needed for receipt.
2. There will be seminar staff at each of the sessions. Please contact the staff to solve simple problems or e-mail/fax to the local coordinator Dr. Akthem Al Manaseer at 408-924-3900 or the Director at 949-585-9137 for his attention.
3. There will be a late fee of \$50.00 for those not registering by 5 p.m, Friday January 12, 2001. Your fax number as well as e-mail addresses are needed to contact you in case of emergencies.

**For Further Information, Please Contact:**

**CPEE, Inc.**, 8659 Research Drive, Suite 201, Irvine CA 92618  
Phone (949) 585-9137, Fax (949) 585-9126, Email: [info@cpee.com](mailto:info@cpee.com), <http://www.cpee.com>

*Ram International*  
*Repeat Full Page Ad*

## Continuing Education

### 2001 SPRING SEMINAR: *Foundations*

Dates: March 14th and 21st  
Place: PG&E Auditorium, San Francisco  
Time: 6:00 P.M. – 9:00 P.M.

The 2001 Spring Seminar is coming up quickly! The seminar will focus on several different aspects of foundation design and analysis, including performance- and capacity-based design, soil-structure interaction, rocking and overturning, deep foundation systems, shoring, and soil improvement techniques. The seminar will be separated into two evenings, with three topics presented each evening. Vendors with foundation-related products and services will be at the seminar, and food will be provided during the registration hour and the break.

Watch for more detailed information, including seminar registration forms, in upcoming newsletters.

### SEAONC RECOGNIZES AND THANKS SCHOLARSHIP FUND CONTRIBUTORS

A special thanks to the following companies and individuals who have recently contributed to the SEAONC Scholarship Fund! Nearly \$12,000 has been collected so far. If you have not already done so, please consider making a contribution so that we can add you to this auspicious list.

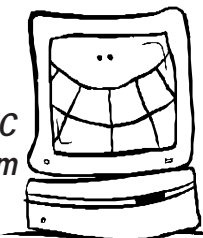
**Contribution Level: \$100 to \$499**  
Simpson Gupertz & Heger Inc.

**Contribution Level: \$50 to \$99**  
John B. Rutherford

**Contribution Level: Under \$50**  
Ravindra Kanitkar

**February NEWS deadline:  
Wednesday, January 10, 2000**

Submit your  
articles by  
e-mail! SEAONC  
@ix.netcom.com



## Seismology

### PROFESSOR ASTANEH-ASL TO GIVE STEEL-PLATE SHEAR WALL PRESENTATION AT JANUARY STEEL SEISMOLOGY SUBCOMMITTEE MEETING

by Rafael Sabelli, Steel Seismology Subcommittee Chair

The Steel Seismology Subcommittee invites interested SEAONC members to attend its January meeting, which will feature "A Report on On-going Seismic Testing of Steel and Composite Shear Walls at UCB" by Professor Abolhassan Astaneh-Asl of the University of California at Berkeley.

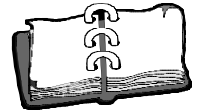
Two major research projects are currently underway at UC-Berkeley with Professor Astaneh as Principal Investigator. One is cyclic testing of two- and three- story steel-plate shear wall dual systems (steel-plate shear walls within special ductile steel moment frames). The objectives are to establish the seismic performance of these walls and to develop rational design procedures and guidelines. This project is sponsored by General Services Administration and SWMB. The second project is to test two 3-story composite dual shear wall systems where precast reinforced concrete wall slabs are bolted to the steel-plate shear walls for composite action.

In these, as in the first set, the steel-plate shear walls are welded to steel special ductile moment frames. This presentation will be a progress report on these projects and will include results of tests done by the time of presentation. The information on a just-released report by Professor Astaneh on: "Seismic Behavior and Design of Steel Shear Walls" will also be discussed. The report includes information on types of steel shear walls, behavior during actual earthquakes, a summary of published test results done worldwide, relevant code provisions and proposed guidelines and suggested details for steel plate shear walls.

The meeting will take place on January 29, 2001 at 6:00 p.m. at the new Degenkolb Oakland office, 300 Frank Ogawa Plaza (15th Street and San Pablo Avenue), Suite 450, near the 12th Street Bart station.

## Bulletin Board

### CALENDAR OF EVENTS



January 21-24, 2001

"Environmental Loads on Structures  
Wind, Snow & Seismic"

Location: Phoenix, Arizona  
Contact: NCSEA, 312/372-8035

January 25-26, 2001

"PEER 2001 Annual Meeting"

Location: Oakland Marriott City Center  
Contact: PEER, 510/231-9554

February 7-10, 2001

"2001 EERI Annual Meeting"

Location: Monterey, CA  
Contact: EERI, 510/451-0905

February 15-16, 2001

"Construction Crane Safety"

Location: Madison, Wisconsin  
Contact: University of WI,  
800/462-0876

March 6, 2001

"California Construction Law"

Location: San Francisco  
Contact: National Business Institute,  
715/835-7909

### MEMBERS IN THE NEWS

A.T. Merovich & Associates, Inc. is pleased to announce the addition of SEAONC Associate Member Peter Chuck to the firm. With more than 12 years of professional experience, Peter will play a major production role in the varied project portfolio of this growing Marin County firm. You can reach Peter at 415/457-0932

### PUBLICATIONS



ATC Announces  
Availability of ATC-53

Report: *Assessment of the NIST 12-Million-Pound (53 MN) Large-Scale Testing Facility*

The Applied Technology Council (ATC) is pleased to announce the immediate availability of the ATC-53 Report, *Assessment of the NIST 12-Million-Pound (53 MN) Large-Scale Testing Facility*. This 44-page report documents the findings of an ATC Technical Panel engaged to assess the viability of the National Institute of Standards and Technology (NIST) 30-year-old, 12-million pound (53 MN) Universal Testing

Continued on Page 6

*Continued from Page 5*

Machine located at NIST headquarters in Gaithersburg, Maryland. The facility had been constructed originally for the purpose of calibrating large-force-measuring devices and for compression or tension-based research on large structural members. In recent years, the high cost of repair and maintenance has required that NIST assess the feasibility and desirability of its continued operation.

The ATC Technical Panel, who met on March 10, 2000 at NIST headquarters, was charged with providing NIST with independent and objective recommendations regarding: (a) the merits of continuing operation of this facility; (b) possible improvements or modifications that would render it more useful to the earthquake engineering community and other potential large-scale structural research communities; and (c) identification of specific research (seismic and non-seismic) that might require the use of this facility in the future.

The ATC-53 Report contains:

1. A description of the capabilities and operation of the NIST Large-Scale Testing Facility;
2. A discussion of the issues and concerns addressed by the Technical Panel as well as their findings and recommendations, including maintenance, repair and upgrade options, and potential research applications; and
3. Supplementary information about prior uses of the facility, fees and charges for proprietary and non-proprietary measurements, and options for operation and improvement developed under prior studies.

Copies of the ATC-53 report can be obtained from the Applied Technology Council, 555 Twin Dolphin Drive, Suite 550, Redwood City, California 94065 (phone, 650/595-1542; fax, 650/593-2320; e-mail, atc@atcouncil.org; web site, www.atcouncil.org). Price: \$25.00 per copy (within California, please add applicable local sales tax; for destinations outside the United States, please contact ATC for the cost of shipping).

**ICBO and ASTM Form Alliance to Produce Comprehensive Set of Standards**

Earlier this year, ICBO and the American Society for Testing and Materials (ASTM) signed an historic agreement to produce a comprehensive book of referenced standards for the 2000 *International Building Code*® (IBC). This unique

document, entitled *2000 International Building Code: ASTM Referenced Standards*™, premiered in September at ICBO's Annual Conference in San Francisco. It was met with widespread excitement and a high volume of early orders signifying strong support from the enforcement and design communities.

For the first time, code users can now obtain a single concise volume containing all ASTM Standards adopted by reference in a model building code. More than 230 building standards can be purchased for a fraction of the price code users previously paid for similar standards.

For more information regarding the important role of ASTM Standards in the 2000 ICC Codes, call 800/423-6587, ext. 3264, to obtain a copy of the article "Setting the Standard for U.S. Building Codes" (*ASTM Standardization News*, November 2000) or visit [www.icbo.org](http://www.icbo.org).

**ANNOUNCEMENTS**

**PEER Annual Meeting**

Join the Pacific Earthquake Engineering Research (PEER) Center for its **2001 Annual Meeting** on January 25-26, 2001 in Oakland. Organized into complementary plenary and poster sessions, the Annual Meeting will showcase the latest results from PEER's core research program on Performance-Based Earthquake Engineering and PEER's Lifelines Research Program. The program will cover seismic hazard, ground motions, ground failure, seismic design methods, component behavior, and advanced seismic simulation using the new PEER computer platform. In addition to learning about the cutting-edge research, the *2001 PEER Annual Meeting* is a valuable opportunity for active exchange of ideas that will help advance the PEER program as well as an opportunity to interact with all the faculty and students working in the program.

This year's venue for the Annual Meeting is the Oakland Marriott City Center Hotel, 1001 Broadway, Oakland, CA. Rooms are available at a reduced rate of \$175/night by phoning the hotel at: 510/451-4000. Identify yourself as an attendee to the PEER Annual Meeting to receive the discounted rate.

Registration to the meeting is *free* for all participants who register prior to **January 15, 2001**. The Annual Meeting program & registration form are available online at the PEER website (<http://peer.berkeley.edu>), or by sending your name and mailing address by email to: [holmon@peer.berkeley.edu](mailto:holmon@peer.berkeley.edu).

**Ahearn, Knox & Hyde** have an opportunity for a good entrepreneurial type S.E. with an interest in a career change that would track toward attainable participation in future shared ownership. Established in Silicon Valley for the past thirty years, we are looking for the right person who wants more than just employee status in their future. Control your own career potential. If interested in the possibility of joining us send your résumé to Ahearn, Knox & Hyde, Inc., 1505 Meridian Ave., Suite B, San Jose, CA 95125, or e-mail: [ahearn@akhse.com](mailto:ahearn@akhse.com).

Immediate Openings: Civil and Structural Engineer. **Bevier Structural Engineering**, a Sacramento, California based firm has immediate openings for senior and mid-level engineers who can assume leadership and responsible roles. Projects include schools, hospitals, commercial, and industrial buildings. Our firm offers excellent opportunities for growth and advancement for civil and structural engineers with building design experience. We offer a competitive compensation and benefits package as well as a positive work environment. California CE or SE license preferred. Please fax or e-mail résumés to: Bevier Structural Engineering, phone 916/631-3030, fax 916/631-8996, e-mail: [bill@bevier.net](mailto:bill@bevier.net)

**Biggs Cardosa Associates** has immediate openings for various levels of structural engineers in San Jose, San Francisco, Fresno and Eugene (OR). Come work for a leading and fast growing structural engineering firm on either building or bridge projects. Please check our web site for full details: [www.biggs-cardosa.com](http://www.biggs-cardosa.com). You can also send your résumés to Biggs Cardosa Associates, Inc. 1871 The Alameda, Suite 200, San Jose, CA 95126, or by e-mail through our web site. EOE

**Degenkolb Engineers**, has opportunities for engineers to join our creative, enthusiastic, motivated team. Recognized leaders in seismic engineering, our firm offers a diverse, challenging mix of projects on both new and existing structures. Our firm growth is rooted in the career development of our engineers to leadership positions. Bay Area offices are located in downtown San Francisco and Oakland, adjacent to BART. Regional offices are located in Los Angeles and Portland. Our benefits package is unsurpassed in the industry. Openings are available at all levels and all locations. Minimum requirements are MSSE, excellent communication skills, and a desire to work in a challenging, collaborative environment. For more information, visit our web site at [www.degenkolb.com](http://www.degenkolb.com). Submit cover letter, résumé and references via e-mail or to Degenkolb Engineers, 225 Bush Street, Suite 1000, San Francisco, CA 94104-4207. EOE

**DeSimone Consulting Engineers**, an award winning engineering firm, seeks engineers with excellent communication skills; MSSE desired. We are a very successful firm with offices in New York, San Francisco and Miami. Engineering positions are available in the San Francisco office, located immediately adjacent to BART and MUNI. Presently, we are seeking ambitious engineers from entry level to Senior Project Managers for the design of multi-story buildings. For more information about DCE and for a general over-

*Continued on Page 7*

*Continued from Page 6*

view of our Company and project mix, visit our web site at [www.de-simone.com](http://www.de-simone.com). To join our outstanding team of engineering professionals, send your introduction letter and résumé to Ted Canon at DCE, 10 United Nations Plaza, Suite #410, San Francisco, CA 94102.

**EQE** has immediate openings in Oakland office for engineers at various levels of exp. Seeking Project Manager with min. 10 years exp. in structural/seismic design and analysis of buildings (concrete exp. preferred) verbal/writing and business development skills, and S.E. lic. Also seeking engineer with 3-5 years exp. in analysis and design (P.E. preferred). Send résumé to: EQE International, Attn: Ken Mark, 1111 Broadway, 10th Floor, Oakland, 94607 or e-mail to [kmm@eqe.com](mailto:kmm@eqe.com).

**KPFF Consulting Engineers** seeks Project Managers and Project Engineers w/5-15 years experience in the analysis and design of buildings. Experience in all building materials req'd. CE license required; MS degree preferred. Applicant must be motivated and possess excellent written and verbal skills. Send résumé with references to: KPFF Consulting Engineers, 180 Pacific Avenue, San Francisco, CA 94111. EOE

**Landtech Consultants**, a structural and civil engineering firm, has openings for engineer and designer positions. We offer a competitive salary package, nice work environment and excellent opportunity to grow with the firm. If you are interested in working on a variety of building projects in a small firm environment, send us your résumé to: 3845 Beacon Avenue Suite D, Fremont, CA 94538 or fax to 510/505-9503.

**MKM & Associates of Santa Rosa, CA** seeks engineer with minimum 2 years experience with emphasis in timber construction in residential & commercial low-rise buildings. Salary with Bonus considerations dependent on experience & availability to start. Excellent benefits. Please fax résumé to 707/578-7153 or e-mail [office1@mkmassociates.com](mailto:office1@mkmassociates.com).

**Nishkian Menninger** seeks experienced registered structural engineer with 10 or more years experience in various types of structures; office buildings, high rises, schools, multiple-tenant residential & other commercial projects, garages and seismic rehab. Résumé & salary requirement to: 510 Howard Street, San Francisco, CA 94105 or e-mail: [levon\\_n@nishkian.com](mailto:levon_n@nishkian.com).

**Rinne & Peterson**, a medium sized Structural Engineering firm, seeks self motivated, self-starter engineers with effective communication skills from Entry-Level through Senior-Level to work on a wide variety of challenging projects. This is an opportunity with long term growth potential. Ongoing professional development is encouraged and supported. Generous employee benefits including flexible work schedules, great staff, and a very desirable work environment. Send résumé and ref. to: Human Resources, 1121 San Antonio Rd., Suite C200, Palo Alto, CA 94303-4311; fax# 650/428-2861; e-mail: [sharonberman@rpe.com](mailto:sharonberman@rpe.com).

**Rutherford & Chekene** is currently offering outstanding career opportunities to engineers and

Cad drafters with all levels of experience in both our San Francisco and new Oakland offices. In addition to our generous benefits package, we offer the opportunity to learn from some of the best engineers and Cad professionals in the Bay Area while working on exciting projects - all in a supportive office environment. If you wish to learn more, contact Peter Revelli at: Phone: 415/495-4222, Fax: 415/546-7536, or E-mail: [prevelli@ruthchek.com](mailto:prevelli@ruthchek.com). Also visit our web site at [www.ruthchek.com](http://www.ruthchek.com).

**Rutherford & Chekene** is also seeking licensed CE's and SE's for a challenging 8-12 month forensic engineering project. Position requires 2 days/week in L.A., but offers flexible schedule, generous compensation, and perks. Candidates must be detail-oriented and capable of independent thought, with excellent critical thinking and communication skills. Wood frame residential experience a plus, but no substitute for a sharp mind. Perfect transition job for self-motivated engineers seeking a change of pace. Full time commitment preferred. Contact Peter Revelli or David Bonowitz at: phone 415/495-4222, fax 415/546-7536, email [prevelli@ruthchek.com](mailto:prevelli@ruthchek.com) or [dbonowitz@ruthchek.com](mailto:dbonowitz@ruthchek.com).

**Simpson Gumpertz & Heger Inc. (SGH)**, is a growing and dynamic consulting engineering firm with offices in Arlington, MA and San Francisco, CA. SGH has an international reputation in design, investigation, research and development of structural and building envelope systems, mechanical components, and materials. The variety of our expertise enables the firm to undertake investigative, research, and design projects of a complex and unusual nature. We seek creative, enthusiastic, motivated individuals for two Structural Engineering positions in our downtown San Francisco office in the area of structural design analysis of office and institutional buildings: SR ENGINEER: S.E., 5 - 10 yrs exp; ENGINEER: C.E., 2 - 5 yrs exp. We offer an excellent compensation and benefits package in a corporate culture based on learning and growth. At SGH you'll gain the strength of our reputation and the creativity of diverse and complex projects. To learn more about SGH, please visit our web site at [www.sgh.com](http://www.sgh.com). We are an equal opportunity employer and value the diversity of our workforce. Please forward your résumé and letter of interest to Dept. DEJ, SGH, 222 Sutter Street, San Francisco, CA, 94108, FAX 415/981-7125, e-mail [dejerome@sgh.com](mailto:dejerome@sgh.com)

**Structural Design Engineers** seeks staff/project structural engineers with experience in wood, masonry, concrete and steel design. Min. 4 years experience. MS and C.E. license preferred. Computer analysis skills important. Send résumé to: Structural Design Engineers, 120 Montgomery St., Suite 1410, San Francisco, CA 94104.

**URS**, a leading professional engineering and environmental consulting firm, is seeking Structural Engineers for its San Francisco office. With over 16,000 employees worldwide and a staff of 650 in the Bay Area, URS is one of the world's most diverse and fastest growing architectural and engineering companies. We offer a broad range of exciting worldwide project opportunities in Facilities Design, Surface Transportation Design, and Aviation Facilities Design. We are seeking Civil/Structural engineers to join our team in San Francisco. The positions require a

BSCE, with MSCE preferred. We are seeking qualified candidates at all levels, from entry level to 20+ years of experience. Training and/or experience in building design, seismic analysis, seismic evaluation, retrofit design, and production of structural design documents is preferred. Candidates must be familiar with California Building Codes. We offer a competitive salary/benefits package. Send résumé with salary history to URS, Human Resources - SSE, 100 California St., Suite 500, San Francisco, CA 94111 or email to [Barbara\\_Noel@urscorp](mailto:Barbara_Noel@urscorp). Equal Opportunity Employer.

**Watry Design, Inc.** which is located in the San Francisco Bay Area, is in search of highly motivated engineers to join our rapidly growing team. Watry is a full service Architectural/Engineering Firm specializing in the design of large concrete structures, including high-rise hotels and apartments as well as award-winning parking structures. This position offers the right individual an opportunity to play an integral role in the design of multi-million dollar projects with a firm that fosters a cohesive family like environment. The applicant must possess a B.S. in Structural Engineering (or equivalent) with a P.E. or S.E license being highly desirable. A background in the design of concrete and post-tensioned structures, strong computer skills, and excellent communication skills are beneficial. If you would like further information regarding the Watry Design, Inc., please visit our web site at [www.watrydesign.com](http://www.watrydesign.com). Submit all résumés to: Watry Design Inc., 815 Hamilton Street, Redwood City, CA 94063 attn: Julie Snaman or you can send electronically to: [jsnaman@watrydesign.com](mailto:jsnaman@watrydesign.com).

**ZFA Structural Engineers** seeks all levels of engineers for all three of its growing offices - in San Francisco, Santa Rosa, and Sacramento. Minimum 2 years experience for positions open in Sacramento and Santa Rosa. Senior or Associate positions for S.E.'s also available for all three offices. Diverse and challenging project areas include: schools, hospitals, industrial, wineries, commercial, public, low-rise office and light frame buildings. A great place to further your career, ongoing training and professional development is encouraged and supported by ZFA and we have an excellent profit-sharing and benefits package. Whether you want to enjoy the relaxed lifestyle of wine country in Sonoma County or being close to Tahoe and gold country in Sacramento, or the excitement of San Francisco, we have the professional opportunity for you! Send résumé and cover letter to: ZFA Human Resources, 1212 Fourth Street, Suite Z, Santa Rosa, CA 95404 or email to: [MichaelD@zfa.com](mailto:MichaelD@zfa.com).

**City of San Jose**, Plan Check Engineer. Under direction, performs plan review in accordance with structural engineering principles and Uniform Codes. Requires Bachelor's Degree in Civil Engineering or a closely related field from an accredited college or university, four (4) years of progressively responsible professional civil and structural engineering experience, and registration as a Civil Engineer in California for at least two years. A Master Degree in structural engineering and Plans Examiner ICBO certification is highly desirable. Salary Range: \$2,496.00 - \$3,041.60 bi-weekly, plus excellent manage-

*Continued on Page 8*

*Continued from Page 7*

ment benefits. Last Date for Filing: Open Until Further Notice. For Application and Announcement: Contact Human resources Dept., City of San Jose, 801 N. First St., Room 207, San Jose, CA 95110-1779, 408/277-4205

**City of San Leandro, California,** Plan Check Engineer, Salary: \$5,399-\$6,561 per month (3.5% COLA on 3/1/01). Add'l 5% of sal, with CA. Reg. as a Structural Eng and excellent benefits. Reporting directly to the Chief Building Official, the City is seeking a civil or structural engineer to review construction plans and specifications to ensure they meet all applicable federal and state building codes, uniform fire code, zoning laws and disability access regulations. An individual who can work independently, handle multiple priorities, work as part of a team and have excellent interpersonal skills is encouraged to apply. Requires a civil or structural engineering degree from an accredited college or university, plus two years experience performing plan review, preferably in a city or county agency; California registration as a civil engineer is required and preference will be given to candidates who possess a CA. reg. as a Structural Engineer. ICBO certification as a Plans Examiner or Building Official must be obtained within one year from date of hire. **FINAL FILING DATE: 5:00 p.m., Friday, January 12, 2001.** For application material, contact the City's Job Hotline at 510/577-3397 or download from [www.ci.san-leandro.ca.us](http://www.ci.san-leandro.ca.us). Human Resources Dept., 835 E. 14th St., San Leandro, CA 94577. No résumés or late applications accepted. EOE

**Colin Gordon & Associates** is seeking a structural dynamicist with MS or PhD in civil or structural engineering, with several years of experience in building structural design. FEA modeling and dynamic/modal analysis experience is required. This is *not* your traditional structural engineering job. CG&A is a small but internationally recognized vibration consulting firm based in San Bruno. In addition to projects covering a full range of vibration and noise control, we specialize in the design of low-vibration buildings for the microelectronics, biotechnology, and medical research communities. Good written and oral communications skills are necessary. Travel and field measurement work may be required. (Our service area includes U.S., Asia and Europe.) We offer excellent salaries and benefits (health, dental, 401(K), profit sharing, etc.). Email, fax, or mail your résumé with cover letter to: Colin Gordon, Colin Gordon & Associates, P.O. Box 39, San Bruno, CA 94066, fax 650/358-9430, email: [mgendreau@cganda.com](mailto:mgendreau@cganda.com).

**DASSE Design Inc.** seeks Project Engineers for its SF and Oakland offices to work on exciting, high profile projects for top architects in high tech, public, education and health care markets. Career growth opportunities with potential for rapid advancement. Minimum preferred qualifications are: MSCE, PE license, and 5-10 years of relevant design (new and retrofit) experience and the desire to grow in a collaborative environment. Come join our team of enthusiastic, talented professionals. E-mail résumés to [andrews@dasse.com](mailto:andrews@dasse.com). Learn more on our website at [www.dasse.com](http://www.dasse.com).

**DES Architects + Engineers,** a leading mid-

Peninsula A/E firm, seeks Structural Design Engineers with CE or SE license, minimum 5 years experience in wood, steel, concrete and masonry. Projects include schools, hospitals, corporate campuses, etc. Competitive salary and complete benefit package. Send résumé with intro letter and salary requirements to DES, PO Box 3599, Redwood City, CA 94064. Fax to 650/364-2618, Attn: Niki Hithe or e-mail to [jobs@des-ae.com](mailto:jobs@des-ae.com). Visit our website at [www.des-ae.com](http://www.des-ae.com).

**Diversity of engineering projects adds excitement to work.** One of the hallmarks of our practice at **GFDS Engineers** is a diversity of engineering projects. Our projects range from upgrade of historically significant buildings to new commercial buildings incorporating modern architectural styles; from multi-family residential buildings to custom residences, to tenant improvements. We work with all major construction materials and look for opportunities to incorporate new technologies into our solutions. GFDS is seeking new additions to our engineering family. We are a small engineering practice with traditional values and a progressive work environment. We are situated in downtown San Francisco, minutes walk from BART. If you are interested in opportunities with GFDS Engineers, please email or fax your résumé to Kelly Cobeen: [kelly@gfdseng.com](mailto:kelly@gfdseng.com), 415/433-0895.

**You, Inc.** Work with your own clientele in a collaborative environment that allows you to benefit directly from your successfully run projects. Contact Hohbach-Lewin to find out about our unique corporate structure. Applicable to all levels. Offices statewide. E-mail to [aalee@hohbach-lewin.com](mailto:aalee@hohbach-lewin.com) or Fax 650/617-5930

An Outstanding Place to Work-**Interactive Resources** ([www.intres.com](http://www.intres.com)) offers competitive compensation & benefits, ongoing career development, interesting projects, and a unique firm culture in a great historic coastal town in the East Bay. We also offer ownership potential. Registered PE minimum, SE preferred. CA/West Coast experience necessary. See our website for more information. Send résumé to 117 Park Place, Point Richmond, CA 94801. Fax: 510/232-5325.

**Structural Design Group Inc.** of Santa Rosa, CA has an immediate opening for an engineer experienced in the design of residential, commercial, or educational facilities. Excellent Salary, Bonus, flexible hours and a great Benefit package, including a matching contribution to retirement plan and medical benefits for entire family. Please fax résumé to 707/284-3646 or e-mail: [RichB@s-d-g.net](mailto:RichB@s-d-g.net)

**Teter Consultants, LLP** ([www.tetercon.com](http://www.tetercon.com)), a Central Valley based multi-disciplined A&E consulting firm with offices in Visalia and Fresno, is seeking an experienced senior structural engineer interested in competitive compensation & benefits, ongoing career development, interesting projects, and a unique firm culture to join its growing and dynamic organization. We also offer ownership potential and desire a long term working relationship. Registered PE minimum, SE preferred. See our website for more information. Send résumé to 1025 N. Demaree, Visalia, CA 93291. Fax: 559/625-5282.

**Tipping Mar + associates:** We have an enthusiastic staff of twenty five who work in a collabo-

orative work environment. Our approach is innovative, and our projects diverse. Our work includes new buildings and seismic upgrades. We are seeking a bright, creative, self-motivated individual for a challenging position as a structural engineer with our firm. Please send your résumé with a cover letter to Tipping Mar + associates, 1906 Shattuck Ave, Berkeley, CA 94704, fax to 510/549-1912, or e-mail [steve@tippingmar.com](mailto:steve@tippingmar.com)

*Job Forum insertion fee:  
\$150 up to 450 characters/spaces  
\$15 for each 45 characters/spaces thereafter  
All job forum ads will be posted on the  
SEAONC Web Site*

### Posting for Membership

#### MEMBER

Chih-Hung Cheng  
Senior Project Engineer,  
DASSE Design  
Eric J.P. Le Balanger  
Engineer, Consultant  
David Ovadia  
Associate, Rinne & Peterson

#### ASSOCIATE

Vladimir B. Aronchik  
Engineer, Rinne & Peterson  
Regan M. Bramblett  
Designer, Degenkolb Engineers  
Anita H. Chu  
Engineer, Ove Arup & Partners  
James V. Chung  
Structural Designer, Van Maren & Associates  
Steve T. Lee  
Staff Engineer, DASSE Design  
Cheng-Yeh (Peter) Liu  
Civil Engineer, Black & Veatch  
Winne Lo  
Civil/Structural Designer, GEZ Architects & Engineers  
Hung M. Ma  
Structural Engineer, RMJ & Associates  
Marlou B. Rodriguez  
Engineer, Biggs Cardosa Associates  
Tomhsz M. Wienskowski  
Structural Engineer, Skidmore, Owings and Merrill  
Christopher J. Wilson  
Design Engineer, GFDS Engineers  
Gary H. Yu  
Design Engineer, Middlebrook + Louie

#### STUDENT

Jamison Smith  
Graduate Student, UC Berkeley  
Qihong Zhao  
Graduate Student, UC Berkeley

*Computers and Structures*  
*New Display Ad*

upcoming events

- JAN 2 SEAONC MONTHLY MEETING
- JAN 29 SEISMOLOGY STEEL SUBCOMMITTEE MEETING  
page 5
- FEB 6 SEAONC MONTHLY MEETING
- MAR 14 & 21 2001 SPRING SEMINAR: *Foundations*  
page 5

# Registration

## Structural Engineers Association of Northern California *January 2nd Joint ACI/SEAONC PROGRAM*

5:45 PM  
General Assembly

6:30 PM  
Dinner

7:30 PM  
Program

*"Airtrain System at the San Francisco International Terminal"*

Location:  
**The City Club**  
155 Sansome Street,  
10th Floor  
San Francisco

BART:  
Montgomery Street  
Exit,  
San Francisco

If no label is shown above, or for guests, please fill in the form below.

NAME \_\_\_\_\_

COMPANY \_\_\_\_\_

ADDRESS \_\_\_\_\_

CITY \_\_\_\_\_ STATE \_\_\_\_\_ ZIP \_\_\_\_\_

PHONE \_\_\_\_\_ FAX \_\_\_\_\_

**RSVP by fax to: 415/764-4915**, or phone: 415/974-5147, email: office@seaonc.org  
Make check payable to **SEAONC** and bring with you to the door.

**Deadline for preregistration: 12 noon, Wednesday, December 27, 2000**  
Dinner and program reservations are limited to 180. Register early! No cancellations after 12 noon, Wednesday, December 27, 2000. *No-shows will be invoiced. Tickets not claimed by 6:45 p.m. on the night of the event are subject to being sold. Note: Individuals with outstanding monthly meeting balances are required to pay in advance for a meeting reservation and pay all outstanding monthly meeting invoices.*

COST:	PRE-REGISTERED	LATE REGISTRATION
SEAONC Member	<input type="checkbox"/> \$32	<input type="checkbox"/> \$37
Junior Mbr (34 and under)	<input type="checkbox"/> \$28	<input type="checkbox"/> \$33
Non-Member	<input type="checkbox"/> \$35	<input type="checkbox"/> \$40
Student	<input type="checkbox"/> \$15	<input type="checkbox"/> \$15