

A Message from the President

Spring in Northern California is just around the corner (even though I can see snow on top of Mount Diablo from my house as I write this article), and that means the most active time of the year for SEAONC is about to begin. Hopefully, you will be able to take advantage of a number of the activities that will be occurring over the next few months. Just as a quick reminder, here are but a few of the important events that are on the immediate horizon:

- The Winter Seminar on Foundations. This seminar will be held on March 14th and 21st at the PG&E Auditorium. This should be a very informative and useful program for all practicing engineers. It will cover a number of diverse topics related to foundation design, including performance based design of foundations, soil-structure interaction, foundation rocking and overturning effects (a favorite topic for many), deep foundation systems, soil improvement techniques and deep excavation shoring. The various presentations will be made by both structural and geotechnical engineers. Please see the insert in this newsletter for more information and the registration form. I am certain that you will get a lot out of this excellent seminar.

Continued on Page 2

2001 CONVENTION

Fun and Sun are beckoning! The 70TH Annual SEAOC Convention will be held at the spectacular Loews Coronado Bay Resort, situated across the bay from Downtown San Diego. Please plan to join your fellow colleagues from September 26-29, 2001. There will be four days of outstanding conferences and socializing. Aside from the nearby beaches, you'll be close to the splendor of Coronado Island, as well as downtown San Diego's vibrant Gaslamp District and Balboa Park, home to a variety of quality museums and the world famous San Diego Zoo. For more information, please visit the Convention Website at www.seaoc2001.org.

March Program

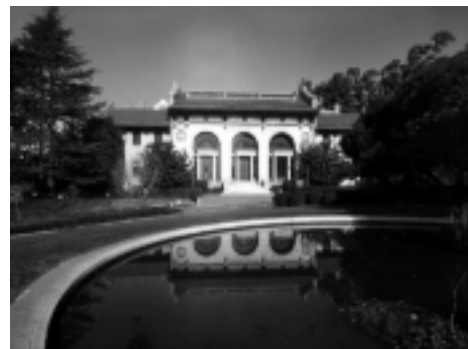
SEISMIC RETROFIT AND RENOVATION OF THE HEARST MEMORIAL MINING BUILDING AT UC BERKELEY

Joint Meeting with the American Institute of Architects

by Jamison Curry, Program Chair

The Structural Engineers Association of Northern California is hosting a joint session with the American Institute of Architects. The program for the March 6th dinner meeting presents the seismic retrofit and architectural redevelopment of one of the historic jewels of California. Hearst Memorial Mining Building was originally constructed on the UC Berkeley campus in 1902 to 1907, with the patronage of Phoebe A. Hearst in honor of her husband. John Galen Howard originally designed the building. It was noted for its striking interior, which was inspired by Parisian libraries designed by Henri Labrouste, the noted French Beaux-Arts Architect. The building is located a scant 250 meters from the active Hayward Fault.

Speakers for this program are Brendan Kelly, from NBBJ, the project architect, and Hal Davis, from Rutherford & Chekene, project structural, civil, and geotechnical engineers. The retrofit,



Hearst Memorial Mining Building

currently under construction, uses high-damped elastomeric isolators and supplemental viscous dampers installed underneath the building's massive brick walls, above a new foundation. The isolation system reduces seismic forces and avoids the need for more intrusive structural elements in the building that would interfere with the sensitive restoration of the building's interior.

Mr. Kelly will speak about the building's architectural setting, its history and significance, the University's goals for the project, and its place in the Campus's plan and program. He will also speak about some of the new features of the building, which include new laboratories and associated infrastructure.

Mr. Davis will talk about engineering aspects of the project that include the selection of earthquake records for analysis, the selection and design of the high-damped elastomeric isolators, and the underpinning and construction sequence.

This meeting is a joint session with the American Institute of Architects. The presentation will appeal to architects who are interested in the efforts made to preserve, restore, and reuse one of California's historical treasures, and to those interested in the potential of seismic isolation technology.

Meeting Notice

Tuesday, March 6, 2001

Assembly	5:45
Dinner	6:30
Program	7:30

The City Club

*155 Sansome Street, 10th Floor
San Francisco*

Fax registration form on the back of this newsletter to the SEAONC office by **12 noon Friday, March 2, 2001**

See enclosed Registration Form

SEAONC 2001 Spring Seminar

Topic: Foundations

March 14 & 21, 2001
PG&E Auditorium, 245 Market, SF

Continued from Page 1

- The SEAONC Community Involvement Awards Program. Last year the inaugural award was presented to Ashraf Habibullah for his outstanding work with the Diablo Ballet and the Engineers Alliance for the Arts. We are presently accepting nominations for this year's award, so please send in your nominations this month.
- The SEAONC/SEAOC Engineering Excellence Awards Program. Submittals for this annual awards program are due to be submitted within the next month, with judging to occur at the May SEAONC dinner meeting. This has become an outstanding way for our members to demonstrate their cutting edge applications of the latest techniques in our profession. Please consider submitting a project (or two) for the competition. All entrants are also judged in the SEAOC statewide competition, the winners of which will be announced at the Convention in September.
- Rebuilding Together (formerly known as Christmas in April). This activity has become a hallmark of our Association's contributions to the community. On Saturday, April 28th, upwards of sixty of our members will tackle the rehabilitation of a San Francisco house in the course of one day! Because of our expertise and the size of our group, SEAONC has generally been given one of the most difficult projects of the entire program. We are looking for your help with the funding, planning and execution of this important project. Please see page 4 for an announcement about Rebuilding Together.

I could go on, but you get the idea. There are many ways to get involved and make a contribution to your personal career goals, those of your firm, and the success of SEAONC. With your help we will all benefit together.

- James Malley, President

680 MISSION STREET, SAN FRANCISCO

by Jamison Curry, Program Chair

Thanks to Joe Sanders of Charles Pankow Builders, Ltd. and Brett Kaufmann of Robert Englekirk Structural Engineers, our February speakers, for their presentation of the structural design and construction of 680 Mission Street, a pre-cast concrete hybrid moment resisting frame structure.

In addition to our guest speakers, who are from the Los Angeles area, we were also joined by several Stanford students. Mr. Sanders begged me to mention that Charles Pankow Builders, Ltd. is building a multi-story garage that utilizes the pre-cast concrete hybrid moment resisting frame structural system on the Stanford campus.

Mr. Kaufmann began the presentation by speaking about the structural design of the 39-story frame, which has a Maximum Inelastic Response Displacement drift demand of approximately 1%. The structure uses a combination of pre-cast columns and pre-cast hybrid beam or cast-in-place Dywidag Ductile Connection beam elements to resist gravity and lateral loads. It has a mat foundation. Column concrete strengths are as high as 8000 psi.

Mr. Sanders then presented some of the details of the construction. The building is somewhat unusual for a pre-cast concrete structure in that there is not a great deal of repetition. The main function of the structure is for apartment dwellings, however, so the use of concrete was advantageous from that regard. Columns were cast in two story lifts and were constructed using Baugrid, a welded wire tie system, instead of typical column hoop reinforcement, in order to relieve congestion. The building is currently at the 25th floor, and is being erected at a rate of approximately one story every six days. Mr. Sanders pointed out the structural system has been well tested and is not a proprietary system.

Thanks again to our speakers.

HOWARD G. CARTER

by Kenneth R. Wyatt, SEAONC Life Member SE

Howard G. Carter (Life Member SE) died January 5, 2001 at Salinas Valley Memorial Hospital. He was born January 17, 1916 in Ames Iowa and earned his engineering degree at Iowa State University. He served in the U.S. Navy during World War II and was discharged as a Lieutenant in 1945.

At that time he joined the firm of H.J. Brunner. In 1949 he moved to the Carmel-Monterey area to open and head the branch office of Mac Perkins, Structural Engineer. The major projects at this time were the Salinas Valley Memorial Hospital and the Marin County General Hospital designed by Architect Robert Stanton of Carmel.

In 1955, with the lucky number S.E. 777, he opened his own office in partnership with Fremont Slattery as Carter and Slattery, Structural Engineers. Slattery died in 1963. Carter continued the office as Howard Carter, Structural Engineers until 1973. At that time he incorporated the firm as Howard Carter Associates, Inc. structural engineers with three associates. He retired in 1985 and became a moving force in the Monterey Bay Mineral Society. He became quite skilled in unique stone jewelry and small frame pictures in stone.

He was always very active in community affairs being a member of many civic clubs and engineering societies. He served as president in most of these organizations. He joined SEAONC in 1963 with Charles D. DeMaria, Henry C. Powers, and Andrew P. Stevens as his sponsors. He became a Life Member in July 1988.

He was a strong advocate for engineers to participate in the Toastmasters and become confident in public speaking.

Howard Carter was a highly respected as an Engineer and a person by all that knew him.

INVITATION FROM ACI

The local ACI Chapter would like to thank SEAONC for the privilege of allowing us to attend the January 2001 dinner meeting at the City Club.

We would like to extend an invitation to each SEAONC member to join our organization. Membership in the local chapter is only \$30.00 per year for new members. We have our dinner meetings on the second Tuesday of each month, and most of our meetings are at Spengers Fish Grotto in Berkeley. We offer an opportunity for Engineers to reach out to the Ready Mix community for a chance to promote understanding of today's concrete issues. We have a speaker address some of these issues at each meeting. Suppliers of aggregates, admixtures, and cement also attend our monthly meetings.

Our next 2 meetings are on March 13th (at Spengers Fish Grotto in Berkeley) and on April 10th (location to be determined). Please call Ted Allured at 800/753-7711 for more information.

Committees on Assignment

Disaster Emergency Services

SIGN-UP NOW FOR ATC-20 TRAINING

by Mark Okamura, Chair

Included in this month's newsletter is a sign-up form for the Procedures for Postearthquake Safety Evaluations of Buildings Seminar, commonly referred to as ATC-20 Training.

ATC-20 was developed in 1987 and SEAONC's Disaster Emergency Services Committee has sponsored trainings on a regular basis (typically every other year) since then. The training program has evolved and improved over time and currently enjoys a reputation for excellence. Past participants have particularly commented on the value of the afternoon case studies led by SEAONC members with postearthquake safety evaluation experience.

During the seminar, attendees who are licensed professionals (Architectural, Civil, Structural, or Geotechnical) may apply for and obtain Disaster Service Worker identification cards issued by a representative of the Governor's Office of Emergency Services.

We are very excited about the location for this year's training. The Golden Gate Club is an ideal facility. It has a large conference room with a spectacular view of the Golden Gate Bridge and numerous smaller rooms for break-out sessions. It is conveniently located near the Presidio marching grounds. The buildings around the marching grounds present excellent opportunities for damaged building mock-ups. **Breakfast and lunch will be provided.**

If you have any questions about the seminar or would like to participate in its planning, feel free to contact Mark Okamura (510/874-2295) or make plans to attend the committee's monthly meetings at 5:15 PM in the City Club immediately before the SEAONC monthly meetings.

Opinions expressed in the SEAONC NEWS are not necessarily those of the Structural Engineers Association of Northern California. Advertising rates and information sent upon request. Acceptance of advertising and informational brochures in the SEAONC NEWS does not constitute endorsement or approval by SEAONC of the products or services advertised. SEAONC reserves the right to refuse any advertising.

The SEAONC NEWS is published monthly by the Structural Engineers Association of Northern California, 74 New Montgomery Street, Suite 230, San Francisco, CA 94105-3411. It is distributed to members of SEAONC as a membership benefit. Reproduction for noncommercial purposes is allowed if the source is acknowledged.

2000-2001 SEAONC COMMITTEE CHAIRS

Lisa Blanton
Phone: 650/298-8150
Fax: 650/298-8153
E-mail: lblanton@watrydesign.com
Business Forum

Constantine Shuhaibar
Phone: 415/989-9900
Fax: 415/989-9909
E-mail: csh@soha.com
Building Code

Vince deNevers
Phone: 415/421-0375
Fax: 415/421-2966
Bylaws

Jacqueline Bassett
Phone: 415/989-1004
Fax: 415/989-1552
E-mail: jackie_bassett@kpff.com
Continuing Education

Ross Esfandiari
Phone: 925/932-4600
Fax: 925/932-4625
E-mail: rosseng@mindspring.com
Construction Quality Assurance

Mark Okamura
Phone: 510/874-2295
Fax: 510/874-2213
E-mail: mto1@pge.com
Disaster Emergency Services

James Miller
Phone: 415/392-6952
Fax: 415/981-3157
E-mail: jmiller@degenkolb.com
Existing Buildings

Reinhard Ludke
Phone: 415/834-2010
Fax: 415/834-2011
E-mail: rludke@cdengineers.com
Legislative

J. Michael Higginbotham
Phone: 415/397-2222
Fax: 415/397-6392
E-mail: mhigginbotham@longlevit.com
Professional Practices

Jamison Curry
Phone: 510/740-3200
Fax: 510/740-3340
E-mail: jcurry@ruthchek.com
Program

Roger Parra
Phone: 415/392-6952
Fax: 415/981-3157
E-mail: rparra@degenkolb.com
Public Affairs and Membership

David Bonowitz
Phone: 510/740-3278
Fax: 510/771-3227
E-mail: dbonowitz@mindspring.com
Seismology

Carrie Bischoff
Phone: 415/392-6952
Fax: 415/981-3157
E-mail: bischoff@degenkolb.com
Web Site

Wayne Low
Phone: 510/272-9040
Fax: 510/272-9526
E-mail: walow@degenkolb.com
Younger Member Forum

SEAONC SCHOLARSHIP FUND CONTRIBUTORS

A special thanks to the following companies and individuals who have recently contributed to the SEAONC Scholarship Fund! Nearly \$14,000 has been collected so far. If you have not already done so, please consider making a contribution so that we can add you to this auspicious list.

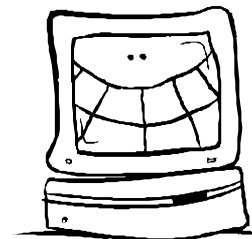
Contribution Level: \$100 to \$499
Rinne & Peterson

Contribution Level: \$50 to \$99
Larry Totten

Contribution Level: Under \$50
William Stephen Price

**April NEWS deadline:
Friday, March 9, 2001**

**Submit your articles by
e-mail! SEAONC@ix.netcom.com**



Public Affairs and Membership

COMMUNITY INVOLVEMENT AWARDS PROGRAM

by Roger Parra, Chair

SEAONC would like to recognize its members who are highly involved in their community. This involvement exemplifies the SEAONC endeavor to "...enhance life safety, environmental health, and economic well being of the public". The SEAONC Community Involvement Award recognizes the members' commitment to SEAONC and the community, and appreciates the improved public perception of structural engineering and of SEAONC, as a result of their work.

The SEAONC Community Involvement Award winner will be selected by the SEAONC Board and the Public Affairs & Membership Committee, and presented during the May dinner meeting. The award consists of \$500 donated to the recipient's charity of choice, and a plaque bearing his/her name and the name of the charity. All nominees will be recognized in the monthly newsletters, in appreciation of their commitment to the community.

Do you know a SEAONC member who fits the description? Examples of commu-

nity involvement include leadership in parent/ teacher associations, high school tutoring, career day presentations, Habitat for Humanity, Christmas in April, neighborhood safety programs, earthquake preparedness seminars, public policy lobbying, dedication to the arts, and many other community outreach programs! If you know of a member who is committed to SEAONC and the community please let us know!

Nominee from last month:

Pat Buscovich Nominated by Laurence Kornfield – For his involvement with the Department of Building Inspectors, the Community Action Plan for Seismic Safety, and the State Building Standards Commission.

This is the last month to nominate – look for the nomination form in this newsletter!

REBUILDING TOGETHER

by Regan Bramblett

Rebuilding Together 2001 is rapidly approaching! We still need your donations! Thank you to everyone who responded to our February requests for

contributions! We are about one-third of the way to reaching our promised sponsorship of \$4000. Contributions are used to purchase tools and materials for the projects. We gratefully acknowledge the support of the following contributors to date:

George & Georgianna Greenwood
McLean Steel, Inc.
David Bonneville
John Sittel
D/PM Incorporated
KL&A of California
Nishkian Menninger
Patrick Buscovich & Associates
Thomas D. Wosser
Ronald and Pamela Mayes
Santos & Urrutia Structural Engineers
Edwin & Rose Zacher
Adamo & Associates Structural Eng.
Roebing Engineers
Larry Coffey Structural Design
Independent Code Consultants
Sierra Engineering Group

We are still working toward reaching our goal, so that we can again provide this very worthwhile service to the community. If you are interested in contributing, or would like additional information, please contact Joyce Feng at Degenkolb Engineers, 510/272-9040.

Business Forum

MARCH LUNCHEON MEETING

Date: Thursday, March 15, 2001
Time: Board Meeting: 11:00 am - 12:00 pm, Lunch/Program: 12:00 pm - 1:30 pm,
Place: City Club, 155 Sansome Street, San Francisco, Wine Room
Speaker: Ms. Catherine Fraser
Topic: "How to recruit top performers."
Cost: \$20.00 Business Forum Member, \$30.00 Non-Forum Member

RSVP: Make reservations by calling the SEAONC office at 415/974-5147 by Monday, March 12th.

With a healthy economy and an excess of work, it is more difficult than ever to find and keep qualified staff. The objectives of the seminar are: Place cost-efficient recruitment advertising where quality individuals will see it; Avoid costly errors that other design professionals do; Discuss the options available for

locating employees and the relative advantages of each. Ms. Fraser will cover newspaper advertising layout, recruitment web sites, and mobile ads.

Catherine Fraser is the President of Fraser Advertising of Redwood City. Ms. Fraser's firm specializes in recruitment advertising.

We will be having a drawing at the end of the meeting for a business related book...so bring your business cards!

Existing Buildings

EBC COMMITTEE UPDATE

by Jim Miller, Chair

A major effort by the Existing Buildings Committee to complete the Guidelines for Seismic Evaluation and Rehabilitation of Tilt-up Buildings and Other Rigid Wall/Flexible Diaphragm Structures is almost complete. The document discusses the background and history of these buildings, describes their performance in previous earthquakes, and discusses various strengthening techniques. The committee, especially Dave McCormick, the principal author, has been working on this comprehensive document that will be a joint publication between SEAONC and ICBO.

The document is currently in its final review by the Board and it should be available later in the year.

Our committee has also been assisting the state committee with selected chapters of the Guidelines for the Seismic Rehabilitation of Existing Buildings (GSREB) which is an updated version of the Uniform Code for Building Conservation (UCBC). This document contains seismic evaluation and strengthening methods for specific building types including: URM buildings, tilt-up buildings, light wood-framed buildings with cripple walls, wood-framed buildings with open fronts, and non-ductile concrete frame buildings. This document was changed from a code to a guideline because ICBO agreed not to

publish any competing codes with the ICC.

To augment the International Building Code, the International Code Council is pursuing the creation of the International Existing Building Code (IEBC). This endeavor has been going on for about one year. The IEBC will pertain to buildings that are modified (such as moving a structure, adding an addition, repairing or altering a portion of a structure, or changing the building occupancy) and also historic buildings. It is currently in a rough draft form and the outline of its structural provision is fairly similar to the San Francisco Building Code. Certainly, if anyone has interest in the IEBC, their assistance is welcome.

*Ram International
Repeat Full Page Ad*

Continuing Education

2001 SPRING SEMINAR: *Foundations*

Dates: Wednesday March 14th and 21st
Place: PG&E Auditorium, San Francisco
Time: 6:00 P.M. - 9:00 P.M.

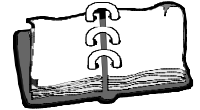
The 2001 Spring Seminar is just around the corner! The seminar will focus on several different aspects of foundation design and analysis, including perfor-

mance-based design, soil-structure interaction, rocking and overturning, deep foundation systems, shoring, and soil improvement techniques. The seminar will be separated into two separate evenings, with three topics presented each evening. Vendors with foundation-related products and services will be at the seminar, and food will be provided during the registration hour and the break.

To sign up, just fill out the enclosed seminar registration form and submit it to the SEAONC office.

Bulletin Board

CALENDAR OF EVENTS



March 3, 10, 17 & 24, 2001

"Seismic Principles Seminar: A Review Course for the PE Exam"

Location: Kaiser Elementary School, Oakland, CA

Contact: 415/546-6546, for a reg. form visit: http://www.asce-sf.org/pe_exam_review.html

March 31, 2001

"Seminar on Welding Procedure Specifications"

Location: Oakland, CA

Contact: Doug Williams, 510/235-9353

MEMBERS IN THE NEWS

Rinne & Peterson to Celebrate 40TH Anniversary

Rinne & Peterson Structural Engineers (RPSE) will celebrate its 40th Anniversary on March 22, 2001. The event, "Back to the 60's", reflects a celebration of the firm's early beginnings during the sixties. The 40th Anniversary 'Groove' will take place at RPSE's corporate office at 1121 San Antonio Road, Suite C200, Palo Alto, CA from 5 p.m. to 9p.m. RPSE invites its friends and clients to attend the festive celebration and enjoy food, drinks, music, and fun.

RPSE, a structural engineering firm, is widely known for high-profile projects such as the Tech Museum of Innovation in San Jose and Applied Materials campuses in Sunnyvale and Santa Clara. The 32-member firm provides quality-engineering services for projects in the microelectronics, telecommunications, bio-pharmaceutical, government, education, healthcare, and international industries.

RPSE's founder, SEAONC Life Member SE Clarence Rinne, continues to provide consulting services to the firm on a part-time basis. RPSE is guided under the leadership of Patrick H. Chow (SEAONC Member SE), President & Principal; Patrick P. Man (SEAONC Member SE), Principal; and Donald Peterson (SEAONC Member SE), Principal.

ATC Board of Directors Elects Officers for 2001 Year

At the annual Organizational Board meeting on January 20, 2001, the Applied Technology Council (ATC) Board of

Continued on Page 7

Seismology

ISSUES NOW BEING STUDIED

by David Bonowitz, Chair

Feeling displaced, adrift, redundant? Or maybe you're the compatible, reliable type. Either way, you'll be interested in the ongoing work of the Seismology Committee.

UBC Equation 30-7

The 1997 UBC (section 1630.2.1) sets two lower bounds on design base shear: Equations 30-6 and 30-7. When calculating drifts, Equation 30-6 may be ignored, but 30-7 must be considered. That's how it is in your 1999 Blue Book too. Why? Because 30-6 is essentially a political requirement, a vestige of the 1933 Reilly Act, but 30-7 is thought to represent a real plateau for long period structures (like isolated or tall buildings), particularly in the near field.

But wait—didn't ICBO vote in 1996 to exempt both 30-6 and 30-7 for drift calcs in order to more closely match the 1994 UBC? Yes, they did. But they must have used butterfly ballots because the decision didn't get picked up in the published code. Now, ICBO intends to correct the oversight in future printings and by issuing an erratum on its web site. SEAOC is in the position of endorsing the erratum even though the code might be more correct the way it is. After all, this isn't SEAOFloida, and votes do mean something here. All kidding aside, Ron Hamburger and Bob Bachman expect to draft a SEAOC position statement to coincide with ICBO's publication of the erratum.

But the technical questions remain. How real is the long period plateau? Is it only a near-field effect? Should the code be based on worst case spectra or on more "average" ground motions?

Deformation Compatibility

Last year the Committee produced useful commentary and recommendations on Deformation Compatibility. (You read

all about them in the September 2000 SEAONC News, remember?) Additional work on the subject is underway.

Meanwhile, at its January meeting, the Committee took up a member's question about the design of stairs for interstory drift (see UBC section 1633.2.4). It was the consensus of the 14 members present that stairs are unambiguously considered "structural framing elements" for the purposes of section 1633.2.4, must be designed for the specified drifts, and may be allowed some inelasticity under those imposed deformations.

Rho Factors

A spirited discussion at the November meeting provided clear motivation to move forward with development of code change proposals regarding redundancy/reliability factors. It was the consensus of the 21 members present that:

- Calculation of *rho* should not have to consider the effects of either accidental torsion (5%) or the torsional amplification factor, A_x .
- It makes sense to waive the cap of 1.25 for special moment-resisting frames if the maximum allowable drifts are reduced by a factor of $1/rho$.
- *Rho* may be taken equal to 1.0 for overturning calculations, foundation design, existing structures for which the code is not triggered, elements of structures, nonstructural components, and equipment (section 1632).

The *rho* factor subcommittee, led by Gary Searer, expects to draft a position statement for discussion at the next meeting of the full Committee on February 27. The paper will cite theoretical and real-life examples to illustrate a "pros and cons" discussion of the infamous factor and its effects on design, both intended and unintended. The Committee's goal is to shepherd a code change proposal through SEAOC in time for the 2002 IBC Supplement.

Continued from Page 6

Directors elected officers for the Year 2001. SEAONC Member, SE Andrew (Andy) Merovich of A. T. Merovich & Associates, San Rafael, California, was elected President. During his five years on the Board, Andy has served as Secretary-Treasurer, Vice President, and on numerous ATC Board Committees. Succeeding Andy as Vice President is Mr. James Cagley of Cagley & Associates, Rockville, Maryland. Mr. Steve Pelham of Barrish, Pelham & Partners, Sacramento, California, was elected Secretary-Treasurer for a second term.

Anthony Lee Promoted to Principal at Hohbach Lewin, Inc.

Hohbach-Lewin is pleased to announce the promotion of Anthony Lee, S.E. to principal. He has been one of the owners of the firm since its inception in 1998 and has played a key role in its growth to its current staff size of 32. His practice specialties are in the areas of design of commercial buildings and seismic retrofits. His past significant projects include the Rainforest Café building at Disney's California Adventure, the non-linear analysis of 111 Sutter in San Francisco and the seismic retrofit of the Santa Ana State Office Building.

Hohbach-Lewin, Inc's New Office

Hohbach-Lewin, Inc. is pleased to announce the opening of a new branch office in Eugene, Oregon. The new office will be co-managed by John Norena, S.E. and Vikki Hunter, P.E. and will service Hohbach-Lewin's expanding clientele in the Pacific Northwest Region. They can be contacted at 296 East 5th Avenue, Suite 302, Eugene, OR, 97401; Phone: 541/349-1701; Fax: 541/349-1702.

CALL FOR PAPERS

2001 SEAOC Annual Convention

The Structural Engineers Association of California issues this Call for Papers to be presented at its 2001 Annual Convention, held at the Loews Coronado in San Diego, California. The dates of the Convention are Wednesday, September 26 through Saturday, September 29.

It is anticipated that the technical program will be composed of papers in the following areas:

Practical Design

Papers of this type will focus on information that can be readily utilized by

structural engineers in day to day design. Pertinent topics would include (but not be limited to) the design or retrofit of buildings, bridges, marine structures, tanks, and towers.

Research/New Methods/New Application

These papers will focus on recent research with application to structural engineering, new methods of analysis, and the use of new materials or new applications of traditional materials.

Business

These papers will discuss the business of structural engineering and could address any of the following issues: new markets, liability, fees, human resources, insurance, publicity, or professional services.

Interested parties should fax a brief (300 words or less) abstract of their paper before April 1, 2001 to:

Eric Lehmkuhl
Technical Program Committee
2001 SEAOC Convention
KPF Consulting Engineers, Inc.
3131 Camino Del Rio North, Suite 1080
San Diego, CA 92108
Phone: 619/521-8500
Fax: 619/521-8591

Authors will be notified of acceptance by May 1, 2001 and papers ready for publication will be due around July 1, 2001. Authors will be provided with detailed guidelines for publication.

ANNOUNCEMENTS

EAA's Students in Arts Program

The Engineer's Alliance for the Arts is embarking on a new and exciting project, the "Students in Arts" program, which will join the engineering community and San Francisco high school students in a unique experience designed to illuminate the engineering profession and connect engineering to the arts. The EAA, a San Francisco Bay Area organization of structural engineers, is dedicated to promoting the visibility of the engineering profession through support of the visual and performing arts. This project is a unique educational program to help inspire the youth of San Francisco.

"Students in Arts" will be a seven week adventure for seven structural engineers who will go into two high school classrooms and mentor the students in design, construction and aesthetically finishing "The Three Brick Bridge". Divided into

five or six person teams, and mentored through the process by the engineers, the teams will each be given 3 bricks and a piece of foam board from which they will construct their bridges. Designed as an 80' by 10' pedestrian span, "The Three Brick Bridge" will be built at a scale of 1/2 inch equals 1 foot. The bridge may be of any design and materials may be glued or pinned together – but must be strong enough to carry a brick at mid-span.

Additional plans call for a field trip to Bay Area bridges to discuss with the students the technical and artistic aspects of one of our local bridges.

At the conclusion of the classroom project, all team bridges will be entered into a competition and judging will be based on meeting the project program, craftsmanship, structural integrity, aesthetics, and verbal and written presentations from the teams.

Monetary Awards will be presented to the students from the winning teams, their schools, and their teachers. The project will culminate with an Award Ceremony at the Yerba Buena Center in San Francisco where all the "Three Brick Bridges" will be displayed during the annual *Youth Arts Festival* sponsored by the San Francisco Unified School District.

Judges for "The Three Brick Bridge" project will be a distinguished panel from the arts and the engineering profession.

As part of our commitment to this endeavor, the Engineer's Alliance for the Arts will contribute \$25,000 to the "Youth Arts Festival", donate \$2,000 to the two participating high schools, purchase a pair of scissors for each teacher in the two schools, and present a \$1000 discretionary award to the two classroom teachers. The total cost for this program will be \$60,000. In conjunction with the *Youth Arts Festival*, engineers will serve as "docents" at the historic Carousel, now relocated to the Yerba Buena Center. During the week of the Festival, engineers will discuss with the public the history and the workings of the Carousel and the Engineer's Alliance for the Arts will sponsor free rides to the public.

Engineer's Alliance for the Arts President, C. Nicholas Watry, recently stated, "This undertaking with the San Francisco Unified School District is our most innovative and exciting event we can have to begin our 'Students in Arts' endeavor. We look forward to enlightening the children about structural engineering and connecting what we do on a daily basis to the world of art. Hopefully, it will open new horizons for these students with the possibility of looking at structural

Continued on Page 8

Bulletin Board

Continued from Page 7

engineering as a future career. It is our ultimate goal to expand the program to other Bay Area communities within a few short years, therefore, bringing our profession to as many students as possible."

The EAA hopes that our fellow members of the Structural Engineers Association of Northern California will join us with their financial contributions, participate as docents at the Carousel, and attend the Award Ceremony in support of the children of San Francisco.

For further information regarding the "Students in Arts" project, please call Jill Weinstein, Executive Director, at 925/935-4556.

2000 IBC Seminar

ICBO and NCSEA, in cooperation with S.K. Ghosh Associates, Inc., will be presenting a seminar on the structural provisions of the 2000 IBC on March 15, 2001 at the Embassy Suites in Milpitas. This intensive one-day seminar will focus on the following code provisions:

- Seismic, wind and other design loads
- Quality assurance, special inspection and testing programs
- Soils and foundations
- Concrete, masonry, steel and wood design requirements

This seminar will be presented by two of the following speakers who have been directly involved with the development of the 2000 IBC:

- Dr. S.K. Ghosh, President, S.K. Ghosh Associates, Inc., highly acclaimed speaker and author on seismic-related issues and concrete design.
- Gerald Neville, ICBO Seminar Services, instructing seminars for structural provisions of building codes since 1971.
- Susan Dowty, S.E., S.K. Ghosh Associates, Inc., prior Structural Secretariat during the development of the 2000 IBC.

The registration fee is \$235 for SEAOC/ICBO members and \$285 for nonmembers. Registrations received 30 days before the scheduled seminar receive a \$25 discount. For more information and to register for this seminar (Seminar 381i), visit ICBO's website at www.icbo.org or call 800/423-6587, x3418.

Job Forum

Ahearn, Knox & Hyde have an opportunity for a good entrepreneurial type S.E. with an interest in a career change that would track toward attainable participation in future shared ownership. Established in Silicon Valley for the past thirty years, we are looking for the right person who wants more than just employee status in their future. Control your own career potential. If interested in the possibility of joining us send your résumé to Ahearn, Knox & Hyde, Inc., 1505 Meridian Ave., Suite B, San Jose, CA 95125, or e-mail: ahearn@akhse.com.

Immediate Openings: Civil and Structural Engineer. **Bevier Structural Engineering**, a Sacramento, California based firm has immediate openings for senior and mid-level engineers who can assume leadership and responsible roles. Projects include schools, hospitals, commercial, and industrial buildings. Our firm offers excellent opportunities for growth and advancement for civil and structural engineers with building design experience. We offer a competitive compensation and benefits package as well as a positive work environment. California CE or SE license preferred. Please fax or e-mail résumés to: Bevier Structural Engineering, phone 916/631-3030, fax 916/631-8996, e-mail: bill@bevier.net

Biggs Cardosa Associates has immediate openings for various levels of structural engineers in San Jose, San Francisco, Fresno and Eugene (OR). Come work for a leading and fast growing structural engineering firm on either building or bridge projects. Please check our web site for full details: www.biggs-cardosa.com. You can also send your résumés to Biggs Cardosa Associates, Inc. 1871 The Alameda, Suite 200, San Jose, CA 95126, or by e-mail through our web site. EOE

Degenkolb Engineers, has opportunities for engineers to join our creative, enthusiastic, motivated team. Recognized leaders in seismic engineering, our firm offers a diverse, challenging mix of projects on both new and existing struc-

tures. Our firm growth is rooted in the career development of our engineers to leadership positions. Bay Area offices are located in downtown San Francisco and Oakland, adjacent to BART. Regional offices are located in Los Angeles and Portland. Our benefits package is unsurpassed in the industry. Openings are available at all levels and all locations. Minimum requirements are MSSE, excellent communication skills, and a desire to work in a challenging, collaborative environment. For more information, visit our web site at www.degenkolb.com. Submit cover letter, résumé and references via e-mail or to Degenkolb Engineers, 225 Bush Street, Suite 1000, San Francisco, CA 94104-4207. EOE

Outstanding engineers with excellent communication skills sought by award-winning DeSimone Consulting Engineers in San Francisco. We are seeking ambitious individuals, from entry-level to Senior Project Managers and MSSE's, for the design of multistory buildings. Our office is directly adjacent to BART and MUNI. A successful and growing firm, DCE also has offices in New York & Miami. For more information on DCE and a general overview of our project mix, visit our website at www.de-simone.com. Join our exceptional team of professionals! Send your introduction letter and résumé to Mr. Ted Canon, DCE, 10 United Nations Plaza, Suite 410; San Francisco, CA 94102.

EQE has immediate openings in Oakland office for engineers at various levels of exp. Seeking Project Manager with min. 10 years exp. in structural/seismic design and analysis of buildings (concrete exp. preferred) verbal/writing and business development skills, and S.E. lic. Also seeking engineer with 3-5 years exp. in analysis and design (P.E. preferred). Send résumé to: EQE International, Attn: Ken Mark, 1111 Broadway, 10th Floor, Oakland, 94607 or e-mail to kmm@eqe.com.

Forell/Elsesser Engineers, an award-winning structural/civil engineering firm, offers outstanding career opportunities to engineers and Cad-

drafters with all levels of experience who seek a dynamic, challenging and rewarding work environment (www.forell.com). Work on exciting projects and collaborate with innovative design engineers. We offer an unparalleled salary & benefits package, including employer matched 401(k), pension and incentive compensation plans. Contact: Jim Guthrie, 160 Pine St. #600, San Francisco, CA 94111; fax 415/837-0800 or jim@forell.com.

Interactive Resources (www.intres.com) offers competitive compensation & benefits, ongoing career development, interesting projects, and a unique firm culture in a great historic coastal town in the East Bay. We also offer ownership potential. Registered PE minimum, SE preferred. CA/West Coast experience necessary. See our website for more information. Send résumé to 117 Park Place, Point Richmond, CA 94801. Fax: 510/232-5325.

KPFF Consulting Engineers seeks Project Managers and Project Engineers w/5-15 years experience in the analysis and design of buildings. Experience in all building materials req'd. CE license required; MS degree preferred. Applicant must be motivated and possess excellent written and verbal skills. Send résumé with references to: KPFF Consulting Engineers, 180 Pacific Avenue, San Francisco, CA 94111. EOE

MKM & Associates of Santa Rosa, CA seeks engineer with minimum 2 years experience with emphasis in timber construction in residential & commercial low-rise buildings. Salary with Bonus considerations dependent on experience & availability to start. Excellent benefits. Please fax résumé to 707/578-7153 or e-mail office1@mkmassociates.com.

Nishkian Menninger seeks experienced registered structural engineer with 10 or more years experience in various types of structures; office buildings, high rises, schools, multiple-tenant

Continued on Page 9

Continued from Page 8

residential & other commercial projects, garages and seismic rehab. Résumé & salary requirement to: 510 Howard Street, San Francisco, CA 94105 or e-mail: levon_n@nishkian.com.

Rinne & Peterson, a medium sized Structural Engineering firm, seeks self motivated, self-starter engineers with effective communication skills from Entry-Level through Senior-Level to work on a wide variety of challenging projects. This is an opportunity with long term growth potential. Ongoing professional development is encouraged and supported. Generous employee benefits including flexible work schedules, great staff, and a very desirable work environment. Send résumé and ref. to: Human Resources, 1121 San Antonio Rd., Suite C200, Palo Alto, CA 94303-4311; fax# 650/428-2861; e-mail: sharonberman@rpse.com.

Rutherford & Chekene is currently offering outstanding career opportunities to engineers and Cad drafters with all levels of experience in both our San Francisco and new Oakland offices. In addition to our generous benefits package, we offer the opportunity to learn from some of the best engineers and Cad professionals in the Bay Area while working on exciting projects - all in a supportive office environment. If you wish to learn more, contact Peter Revelli at: Phone: 415/495-4222, Fax: 415/546-7536, or E-mail: prevelli@ruthchek.com. Also visit our web site at www.ruthchek.com.

Rutherford & Chekene is also seeking licensed CE's and SE's for a challenging 8-12 month forensic engineering project. Position requires 2 days/week in L.A., but offers flexible schedule, generous compensation, and perks. Candidates must be detail-oriented and capable of independent thought, with excellent critical thinking and communication skills. Wood frame residential experience a plus, but no substitute for a sharp mind. Perfect transition job for self-motivated engineers seeking a change of pace. Full time commitment preferred. Contact Peter Revelli or David Bonowitz at: phone 415/495-4222, fax 415/546-7536, email prevelli@ruthchek.com or dbonowitz@ruthchek.com.

Simpson Gumpertz & Heger Inc. (SGH), founded in 1956 by three M.I.T. professors, is a growing and dynamic consulting engineering firm with \$20M in gross revenues, a staff of 170, and offices in Boston, MA, San Francisco, CA, and Washington, DC. SGH has an international reputation in design, investigation, research and development of structural and building envelope systems, mechanical components, and materials. The variety of our expertise enables the firm to undertake investigative, research, and design projects of a complex and unusual nature. We seek creative, enthusiastic, motivated individuals for positions in all three offices. We offer an excellent compensation and benefits package in a corporate culture based on learning and growth. At SGH you'll gain the strength of our reputation and the creativity of diverse and complex projects. To learn more about SGH, please visit our web site at www.sgh.com. We are an equal opportu-

nity employer and value the diversity of our workforce. Please forward your résumé and letter of interest to Dept. LAS, SGH, 297 Broadway, Arlington, MA 02474; FAX 781/643-2009; e-mail jobs@sgh.com.

Structural Design Engineers seeks staff/project structural engineers with experience in wood, masonry, concrete and steel design. Min. 4 years experience. MS and C.E. license preferred. Computer analysis skills important. Send résumé to: Structural Design Engineers, 120 Montgomery St., Suite 1410, San Francisco, CA 94104.

URS, a leading professional engineering and environmental consulting firm, is seeking Structural Engineers for its San Francisco office. With over 16,000 employees worldwide and a staff of 650 in the Bay Area, URS is one of the world's most diverse and fastest growing architectural and engineering companies. We offer a broad range of exciting worldwide project opportunities in Facilities Design, Surface Transportation Design, and Aviation Facilities Design. We are seeking Civil/Structural engineers to join our team in San Francisco. The positions require a BSCE, with MSCE preferred. We are seeking qualified candidates at all levels, from entry level to 20+ years of experience. Training and/or experience in building design, seismic analysis, seismic evaluation, retrofit design, and production of structural design documents is preferred. Candidates must be familiar with California Building Codes. We offer a competitive salary/benefits package. Send résumé with salary history to URS, Human Resources - SSE, 100 California St., Suite 500, San Francisco, CA 94111 or email to Barbara_Noel@urscorp. Equal Opportunity Employer.

Watry Design, Inc. which is located in the San Francisco Bay Area, is in search of highly motivated engineers to join our rapidly growing team. Watry is a full service Architectural/Engineering Firm specializing in the design of large concrete structures, including high-rise hotels and apartments as well as award-winning parking structures. This position offers the right individual an opportunity to play an integral role in the design of multi-million dollar projects with a firm that fosters a cohesive family like environment. The applicant must possess a B.S. in Structural Engineering (or equivalent) with a P.E. or S.E. license being highly desirable. A background in the design of concrete and post-tensioned structures, strong computer skills, and excellent communication skills are beneficial. If you would like further information regarding the Watry Design, Inc., please visit our web site at www.watrydesign.com. Submit all résumés to: Watry Design Inc., 815 Hamilton Street, Redwood City, CA 94063 attn: Julie Snaman or you can send electronically to: jsnaman@watrydesign.com.

Move to beautiful wine country and 'grow' your career at the same time! **ZFA Structural Engineers in Sonoma County** seeks four engineers of varying levels of experience for our busy and growing Santa Rosa office: **1)** We are currently seeking an S.E. with extensive wood experience to help co-manage our Schools project area.

Definitely a plus for School / DSA experience. This is a key position with Management and Ownership potential! **2)** ZFA is also seeking to hire two engineers with 1- 3 years experience working with a variety of materials to join our Commercial/Public projects team and our Residential/Light Frame project team (wood experience a must). The Commercial project area will also consider an extra sharp entry-level engineer. **3)** We are also ready to hire an engineer with 3 - 5 years experience to work with our Wineries / Industrial projects team. This person should be interested in working with a variety of both projects and materials. Leave the 'grind' and commute behind and enjoy a great life-style and career by joining ZFA. Excellent profit-sharing, vacation and benefits package. See our website at www.zfa.com. Please E-mail résumé w/ cover letter to: MichaelID@zfa.com.

Architectural Firm doing School and Hospital Design in California since 1977, would like in-house Structural Engineer. Located in Angels Camp, California. Aspen Street Architects, Inc., 209/736-0332, fax: 209/736-9071, email: asa@aspenstreetarchitects.com.

Ben C. Gerwick, Inc. Current openings: • Structural design engineers and heavy construction/civil engineers. Spanish speaking engineers are needed for our South American activities. • Geotechnical Engineer with 5-10 years experience and M.S. Degree. Ability to perform geotechnical calculations for marine structures such as piles, embankments, jetties, piers, caissons and also provide geotechnical support to others in a structural solution oriented atmosphere. • Civil CAD drafter to prepare presentation drawings and details using AutoCAD and Micro Station. We are growing and continue to offer great opportunities within marine offshore, piers/wharves, bridges (substructures), marine inshore-locks and dams, earthquake engineering and rehabilitation, construction methods (foundations), advanced concrete technology and repairs of deteriorated concrete structures. Send résumé to: Paul Bach, San Francisco Office, Ben C. Gerwick, Inc., 20 California St., Suite 400, San Francisco, CA 94111, Tel. 415/398-8972, Fax 415/398-0433, E-mail: peb@gerwick.com

Structural Engineers/CADD Designers - We Want You! Bijan Owen & Associates, seeks motivated Structural Engineers and CADD designers in the following categories: • CADD Designers, all levels • 2-4 years experience in structural analysis, using ETAB, SAP2000 or ADAPT software. M.S. or Ph.D. degree preferred. • 2-4 years experience in concrete design and seismic retrofit. M.S. or Ph.D. degree with California P.E. or S.E. license preferred. Come and join us to work on some of the most exciting and challenging projects in our Redwood City office, great salary & benefits. Please contact or fax résumé to Carmine Filoia at: Bijan Owen & Associates, 650/306-2410 or Fax: 650/364-4678, cfiloia@bflowen.com

CRJ Associates, a Menlo Park A&E Firm, is looking for structural design engineers at all experience levels. P.E. or S.E. license is desir-

Continued on Page 10

Continued from Page 9

able; expertise using structural design software and autocad a plus. Firm specializes in design of new commercial buildings, as well as evaluation and retrofitting of existing structures. Flexible office hours, excellent salary and benefits. For more information, please visit our web-site at www.crjarch.com. Please e-mail résumés to Julie at hr@crjarch.com, or fax to 650/324-0927.

Structural Engineer. Guy Nordenson and Associates, New York, seeks bright Engrs w/initiative, 3-7 yrs exp, MS req'd, for complex institutional projects worldwide. Exc benefits. Fax ltr w/salary reqs & résumé to 212/766-9016 or email to: mail@nordenson.com.

Hohbach-Lewin, Inc., has immediate openings for engineers at all experience levels at both their Palo Alto and Eugene, OR offices. Superior benefits and career growth opportunities. Contact ALee@Hohbach-Lewin.com.

LEE Incorporated - Engineers, Scientists, Contractors - since 1976, seeks Civil Engineer with minimum two years experience. Send résumé to dsgnblld@leeincorporated.com or 408/885-9020, attention: Personnel.

MBA Structural Engineers, Inc. seeks project structural engineers with 3 yrs. min. experience. Tired of the commute? Come join us in downtown Walnut Creek in our growing, professional office environment. We offer a strong compensation package, including flexible hours, bonuses, and full family medical coverage. Send your résumé to 1717 N. California Blvd., Suite 2A, Walnut Creek, CA 94596, or fax to 925/933-6140, or e-mail to mbaeng@pacbell.net.

Middlebrook + Louie is looking for a few good men or women. Work on large, premier, Bay Area and beyond projects? Learn from some of the best and brightest in the profession? We'd like to talk with you if you have something special to offer a 35 person, "can do" structural engineering firm in S.F. Engineering graduates (U.S. MSCE preferred) with 2 plus years appropriate experience, if you can contribute to our technical effort email your particulars to mlbox@mplusl.com or fax to 415/974-3680. We are at 71 Stevenson St., Suite 2100, San Francisco, 94105, just a block from Bart. M+L offers excellent compensation, a comprehensive benefits package and is an equal opportunity employer.

OLMM (www.olmm.com), an award winning structural engineering firm, has immediate opening for a Project Engineer in its Oakland office. We offer challenging and interesting projects, top salary and benefits, excellent opportunity for growth, and a great place to work. Minimum requirements: MS in structural engineering, PE license, and 3 years of responsible structural engineering experience. Please contact Sunil Gupta: sunilg@olmm.com.

Project Engineer wanted for mid-size structural engineering firm in the Mission District of San Francisco. Candidate should have a BS in Civil

Engineering. Experience and P.E. license a+ but not required. Salary depends on Experience. Visit our webpage at www.santosurrutia.com and submit online or send your résumé to Santos & Urrutia Structural Engineering, Inc. 2451 Harrison Street, San Francisco, CA 94110 or email hr@santosurrutia.com

Be part of our winning team. A great career opportunity for the right entry level and experienced engineers at St. Onge and Assoc., a dynamic, successful, small and rapidly - growing East Bay engineering firm with a reputation for excellence. We offer a variety of challenging work, from the innovative to the conventional. Work in an informal environment geared towards producing quality, value - oriented structural solutions, where your professional development is encouraged and supported. Candidates must be team-oriented, creative and self-motivated with excellent written and oral communication skills. Send résumé and references to: St. Onge and Associates, 1934 Park Blvd., Oakland, CA 94606, gsoeng@aol.com, Fax 510/444-1738.

Teter Consultants, LLP (www.tetercon.com), a Central Valley based multi-disciplined A&E consulting firm with offices in Visalia and Fresno, is seeking an experienced senior structural engineer interested in competitive compensation & benefits, ongoing career development, interesting projects, and a unique firm culture to join its growing and dynamic organization. We also offer ownership potential and desire a long term working relationship. Registered PE minimum, SE preferred. See our website for more information. Send résumé to 1025 N. Demaree, Visalia, CA 93291. Fax: 559/625-5282.

Are you stuck in a rut at your current job? Looking to branch out, to do some creative cutting edge design work? To have the opportunity to hone your skills on diverse projects, at a firm nationally recognized for its innovative approaches? Consider **Tipping Mar + associates**. We are a staff of twenty five, working in a collaborative, enthusiastic environment. Our projects range from seismic upgrades to new construction, in the commercial, residential, and institutional sectors. We are seeking a bright, creative, motivated engineer who enjoys challenging work to join our downtown Berkeley office. Please send your résumé with a cover letter to Tipping Mar + associates, 1906 Shattuck Ave., Berkeley, CA 94704, fax to 510/549-1912, or e-mail steve@tippingmar.com.

WRONA Structural Engineers seeks structural design engineers to work on a variety of projects from multistory office buildings to residential structures. MS and PE or SE license a plus. Excellent growth opportunities. Résumé to: Peter Wrona, 111 New Montgomery St. #203, San Francisco, CA 94105. Fax 415/495-8678.

*Job Forum insertion fee:
\$150 up to 450 characters/spaces
\$15 for each 45 characters/spaces thereafter
All job forum ads will be posted on the
SEAONC Web Site*

MEMBER SE

David N. Inlow
Structural Engineer, Skidmore Owings & Merrill
Donald "Lee" Pursell
Local Office Director, Ficcadenti & Waggoner Consulting Structural Engineers, Inc.

MEMBER

Eric T. Easter
Easter & Company
Stacy Gaddini
Staff Engineer, DASSE Design, Inc.
Levi Gurule
Senior Civil Engineer Bridge Design, Sonoma County
Nersi Hemati
Owner, Nersi Hemati Consulting Soil Engineer
Samir Kulenovic
Project Engineer, Ove Arup & Partners (Transfer from Associate)
Kenny A. Ogunfunmi
Professional Engineer, Port of Oakland

AFFILIATE

Stephan A. Kiefer
Building Official, City of Livermore

ASSOCIATE

Shih-Po Chang
Engineer, Ove Arup and Partners California (Transfer from Student)
Joyce Engebretsen
Design Engineer, Hinman Consulting Engineers
Jack Hsueh
Designer, Degenkolb Engineers (Transfer from Student)
Zack C. Kardon
Project Engineer, Murphy Burr Curry
Alex C. Li
Structural Designer, Rutherford + Chekene
Justen L. Nero
President - Historic Restoration, Pacific Coast Restoration
Thomas B. Roitman
Structural Designer, Rutherford + Chekene
Joseph G. Sarmiento
Staff Engineer, Paradigm Structural Engineers, Inc.
STUDENT
John Castagnoli
Graduate Student, Stanford University
Ho-Yan Cheung
Graduate Student, Stanford University
Brian L. Crowell
Graduate Student, Stanford University
Erik Kunkel
Graduate Student, UC Berkeley
Chee Tsao
Graduate Student, UC Berkeley

Computers and Structures
Repeat Full Page Ad

upcoming events

- MAR 6 SEAONC MONTHLY MEETING
- MAR 15 BUSINESS FORUM LUNCHEON MEETING
page 4
- MAR 14 & 21 2001 SPRING SEMINAR: *Foundations*
page 6
- APR 3 SEAONC MONTHLY MEETING

Registration

Structural Engineers Association of Northern California *March 6th Joint AIA/SEAONC PROGRAM*

5:45 PM
General Assembly

6:30 PM
Dinner

7:30 PM
Program

"Seismic Retrofit and Renovation of the Hearst Memorial Mining Building"

Location:
The City Club
155 Sansome Street,
10th Floor
San Francisco

BART:
Montgomery Street
Exit,
San Francisco

If no label is shown above, or for guests, please fill in the form below.

NAME _____

COMPANY _____

ADDRESS _____

CITY _____ STATE _____ ZIP _____

PHONE _____ FAX _____

RSVP by fax to: 415/764-4915 or phone: 415/974-5147
Make check payable to **SEAONC** and bring with you to the door.

Deadline for preregistration: 12 noon, Friday, March 2, 2001
Dinner and program reservations are limited to 180. Register early! No cancellations after 12 noon, Friday, March 2, 2001. *No-shows will be invoiced. Tickets not claimed by 6:45 p.m. on the night of the event are subject to being sold. Note: Individuals with outstanding monthly meeting balances are required to pay in advance for a meeting reservation and pay all outstanding monthly meeting invoices.*

COST:	PRE-REGISTERED	LATE REGISTRATION
SEAONC Member	<input type="checkbox"/> \$32	<input type="checkbox"/> \$37
Junior Mbr (34 and under)	<input type="checkbox"/> \$28	<input type="checkbox"/> \$33
Non-Member	<input type="checkbox"/> \$35	<input type="checkbox"/> \$40
Student	<input type="checkbox"/> \$15	<input type="checkbox"/> \$15