

A Message from the President

The SEAOC Board meeting was held on July 21, 2001 and many issues, which affect the future of our Association, were discussed. I will report on several issues in upcoming articles. In this article I would like to discuss the issue of national structural engineering certification. This issue was given the highest priority by SEAOC at a strategic planning session last February.

The State of California, Board of Professional Engineers and Land Surveyors (BOPELS) is currently scheduled for sunset or discontinuation in two years. That leaves structural engineers wondering what will become of professional registration in California. It appears that a body or organization needs to step forward and provide a viable form of structural engineering certification. Registration / certification could be controlled by our own profession or we could let others control our profession.

This issue seems to draw considerable interest from engineers across the nation, therefore a certification program will need to be a national program and will need to have varying requirements on a State-by-State basis. There are two viable structural engineering organizations that could perform this task: ASCE/SEI and NCSEA.

SEAOC supports NCSEA (National Council of Structural Engineers Associations) and would like to see a national structural engineering certification program performed by individual SEA organizations in each State. The alternative is for ASCE/SEI (American Society of Civil Engineers / Structural Engineering Institute) to perform this task from

Continued on Page 2

September 11th Program

Vertical Base Isolated System in Tokyo

By Jamison Curry, Program Chair

Our September program will feature two members of Ove Arup & Partners presenting an example of a "vertical base isolation" system. Andrew Mole of Arup's San Francisco office will be joined by a colleague who is currently based in Arup's Tokyo office - Mitsuhiro Kanada. The client is a French fashion house, Hermès and the architect is Renzo Piano.

The site is located in a district of Tokyo famous for its high property costs. The client was able to obtain a long narrow site that has streets on two adjacent sides and existing buildings on the other two. Since Tokyo is one of the most seismically active regions in the world, the lateral-



Photo credit: Frank La Riviere

force resisting system was at the top of the design agenda. In the long direction it was not too difficult to provide a reasonable lateral system, but in the narrow direction overturning forces resulted in high column and foundation forces. The architect's aim was to provide as unencumbered a shop floor as possible, and this meant minimizing the size for columns in the area near the shop windows. This would mean

Continued on Page 2

Meeting Notice

Tuesday, September 11, 2001

The City Club

*155 Sansome Street, 10th Floor,
San Francisco*

Fax registration form on the back of this newsletter to the SEAONC office by
12 noon Friday, September 7th, 2001

and coming up...

October 9th, 2001

South Bay Dinner Meeting

*Michael's at Shoreline
2960 N. Shoreline Blvd., Mountain View*
Registration Form will be in October Newsletter

SEAONC SPECIAL SEMINAR SERIES

AutoCAD Training Courses

Russ Bldg., 235 Montgomery Street,
San Francisco
September 11th- November 10th

See insert for complete schedule and registration form

Continued from Page 1

their headquarters in Washington DC. Once a viable certification program is set up, the local SEA organization can offer the program to individual States as an augmentation or a replacement for State run registration boards. NCSEA's model is similar to the Bar Association for the legal profession or the AMA for the medical profession.

SEAOC has a vast volunteer contribution and has thus offered to prepare a draft of a model certification program for NCSEA to review. A SEAOC committee has been formed, is chaired by Bill Warren of SEAOSC and is currently in the development process. Bill Warren and John Shipp of SEAOSC, the two representatives from the SEAOC Certification Committee travel and report to an NCSEA committee about SEAOC progress.

The certification model will include requirements for education, experience, examination, renewal and self-policing of the profession. After certification is awarded, the program should include methods for administration, continuing education requirements for renewal, parameters for self-policing of the profession from violations of professional practice, and policies for revocation of structural engineering certification. If successful, the NCSEA certification program will be adopted by States as a valid licensure and registration program administered by our own profession. The fees for certification and for tests will pay for the administration of the program and the program will thus be self-sufficient. It would also provide another valid reason for membership.

Creation of a national certification program is difficult because all States

Opinions expressed in the SEAONC NEWS are not necessarily those of the Structural Engineers Association of Northern California. Advertising rates and information sent upon request. Acceptance of advertising and informational brochures in the SEAONC NEWS does not constitute endorsement or approval by SEAONC of the products or services advertised. SEAONC reserves the right to refuse any advertising.
The SEAONC NEWS is published monthly by the Structural Engineers Association of Northern California, 74 New Montgomery Street, Suite 230, San Francisco, CA 94105-3411. It is distributed to members of SEAONC as a membership benefit. Reproduction for noncommercial purposes is allowed if the source is acknowledged.

have registration programs with varying requirements. States such as California have a Civil Engineering (or PE) practice act with a Structural Engineering title act. California only requires SE's to design schools and hospitals. Other States have both CE and SE practice acts and require SE's to design all buildings. Most of the other States only have Civil Engineering or PE practice acts and do not require SE's to design anything.

It is important that the certification program be developed on a national basis for survival. Therefore, the model currently being considered is not a two-tier system that California is accustomed to. The current model under consideration is a single tier "base line" certification with additional specialties, where certain additional specialties will be deemed necessary for different regions of the country. Continuing education is likely to be required to attain certification renewal.

The current form of the certification program under consideration includes a base line certification called "Certified Structural Engineer" or CSE and will be similar to the PE in most States. Currently there are six added CSE Specialty Certifications under consideration, including: High Seismic; Blast; High Wind; Cold Region; Long Span; and Marine. Therefore practice could be regulated in different States or regions by the requirement of the base line CSE and any number of CSE specialties to be adequate for practice in that region. Examples of CSE certification based on regional environmental conditions are: High Seismic in California; High Wind in Florida; or Cold Region in Minnesota. Examples of CSE certification by project type are: Blast, Long Span, and Marine.

Grandfathering of existing PE and SE engineering registrations will most likely be performed and will include the award of CSE certifications for past licensure. It is likely that California SE's will be grandfathered into many specialties. Policing procedures are also being developed where SEA's would provide the review necessary to recommend action on violations of professional practice.

Continued on Page 8

Continued from Page 1

moving the lateral-force resisting structure back even further, thereby increasing the overturning forces.

Arup investigated the use of damping and nonlinear systems to reduce overturning forces and therefore column and foundation forces. Horizontal base isolation was clearly not going to provide much help because of the high aspect ratio (height to depth) and the fact that there was no room to allow the base to move.

The approach taken was to allow one of the columns in each of the transverse frames to lift off the ground. This reduced the column forces significantly and allowed the use of a ground-bearing, rather than a piled, foundation. In order to reduce the resulting drifts, vertical dampers were installed which were activated once uplift occurred.

The performance was validated using nonlinear analysis and was defended before a panel of Japan's top professors.

The building opened in June.

Mr. Mole has been with Arup since 1998 and was educated at Oxford University and the University of Washington where he earned a Masters of Science in Engineering. Mr. Kanada is a Berkeley graduate and was an intern with Steven Tipping. He has been with Arup for five years.

Call For Committee Members!

Get involved and be a vital part of the structural engineering profession by joining a committee today.

Simply check off the committee boxes on your 2001-2002 dues statement!

Committees On Assignment

Young Members Forum (YMF)

By Jason Towle, YMF Committee Chair

As many are aware, SEAONC's Young Members Forum is intended to provide an opportunity for younger SEAONC members to get together, network and socialize. Younger members' participation and involvement is absolutely critical to SEAONC. Without active younger members, we would have little hope of continuing our organization into the future.

In order to unify our younger membership and to keep as many interested younger members as informed as possible, I have begun to generate an updated e-mail database list.

Please send an e-mail request to Jason Towle (jltowle@sgh.com) if you would like to be included on the YMF email list for information and invitations to upcoming events. There are also informative fliers attached in this newsletter regarding September/October events. Thank you.

Bulletin Board

SPECIAL LECTURE SERIES ON FIELD EXPERIENCE WITH HIGH VOLUME FLY ASH CONCRETE

By Ron Middlebrook and P.K. Mehta

The economic and ecological benefits of using 15-20% fly ash replacement of cement in concrete are well established. However, dosages from 25-40% have not been readily accepted because of marginal strengths at early ages. High-volume fly ash (HFVA) concrete mixtures containing 50% or more fly ash can avoid the problem by enabling a drastic reduction in the water-cementitious ratio, especially when used in combination with a chemical superplasticizer.

Field experience has shown that HVFA concrete is better than conventional portland-cement concrete with respect to

ATC-20 Update & More Planning

By Michael Fretz, DES Committee Chair

We would like to pass on a quick update regarding OES Disaster Service Worker cards to those who attended the ATC-20 training at the Presidio in June. Based on our recent conversations with OES staff, the cards are being processed. It is their goal to send out cards to applicants by the end of August. Unfortunately, if cards are not sent by that time, there may be some additional delay because the OES is moving to a new building in September. There will be a somewhat longer delay for those who did not complete the application forms, as required. We have been told that some attendees failed to sign the applications, while others did not indicate their professional registration (registration as a professional architect or engineer is a requirement of the State for all volunteer Disaster Service Workers). Copies of incomplete applications will be sent by OES to those individuals for the necessary information, but this will not hold-up those who completed the form properly. Please be patient and rest assured that

pumpability, compactability and resistance to segregation. It is also much less prone to cracking from thermal and drying shrinkage, and therefore makes a durable, environmentally beneficial product. For these reasons, HVFA systems as a sustainable design technology are attracting a great deal of attention from architects and engineers.

San Francisco is hosting a 3-day CANMET/ACI International Symposium on Sustainable Development of Cement and Concrete at the Crown Plaza Hotel (480 Sutter Street), September 17-19, 2001.

A special 8:30 am to noon session on Wednesday the 19th will address field experience, properties and mixture proportioning of HVFA concrete. In addition to the conference attendees, there is space for a limited number of interested individuals who can be admitted to this session for a special fee of \$75. For advance registration or reservations call

progress is being made on this issue.

The DES Committee is also charging ahead with our 2001-02 activities. We met for the first time before the August SEAONC Dinner Meeting and began planning for our next ATC-20 training that we hope to hold in the Fall 2002. We have set our sites on the South Bay and have begun looking for an appropriate site. It will be the first ATC-20 training in that area in about eight years. Our committee will also continue working on updating the OES\SEAONC Volunteer Safety Assessment Engineers (phone tree) Directory, as well as Building Occupancy Resumption Program and Urban Search and Rescue activities.

If your interest in the DES Committee was piqued during the ATC-20 training in June, or if you are curious about some of the committee's other activities, feel free to contact me or simply show up at our next meeting. We will meet on September 11 at 5:30 PM in the Stackpole Room of the San Francisco City Club just before the SEAONC Dinner Meeting. I may be reached during the day at (415) 538-8600. We hope to see you then.

Rose Clarabal of Middlebrook + Louie, at 415-546-4900. Visit our Web site at www.seaoc2001.org for more information on the convention or to register online.

SEAOC PLAN REVIEW POSTED ON WEB

The July issue of SEAOC Plan Review is posted on the SEAOC web site (www.seaoc.org) in the membership-only secure section accessed by user ID "SEAOC" and password "SEA32OC". These access codes are case-sensitive so make sure to use all capital letters.



To Pay your 2001-2002 Dues! Please be prompt with your payment.

Ram International
Repeat Full Page Ad

Biggs Cardosa Associates has immediate openings for various levels of structural engineers in San Jose, San Francisco, Fresno and Eugene (OR). Come work for a leading and fast growing structural engineering firm on either building or bridge projects. Please check our web site for full details: www.biggs-cardosa.com. You can also send your résumés to Biggs Cardosa Associates, Inc. 1871 The Alameda, Suite 200, San Jose, CA 95126, or by e-mail through our web site. EOE

Degenkolb Engineers, has opportunities for engineers to join our creative, enthusiastic, motivated team. Recognized leaders in seismic engineering, our firm offers a diverse, challenging mix of projects on both new and existing structures. Our firm growth is rooted in the career development of our engineers to leadership positions. Bay Area offices are located in downtown San Francisco and Oakland, adjacent to BART. Regional offices are located in Los Angeles and Portland. Our benefits package is unsurpassed in the industry. Openings are available at all levels and all locations. Minimum requirements are MSSE, excellent communication skills, and a desire to work in a challenging, collaborative environment. For more information, visit our web site at www.degenkolb.com. Submit cover letter, résumé and references via e-mail or to Degenkolb Engineers, 225 Bush Street, Suite 1000, San Francisco, CA 94104-4207. EOE

Outstanding engineers with excellent communication skills sought by award-winning **DeSimone Consulting Engineers** in San Francisco. We are seeking ambitious individuals, from entry-level to Senior Project Managers and MSSE's, for the design of multi-story buildings. Our office is directly adjacent to BART and MUNI. A successful and growing firm, DCE also has offices in New York & Miami. For more information on DCE and a general overview of our project mix, visit our website at www.desimone.com. Join our exceptional team of professionals! Send your introduction letter and résumé to Mr. Ted Canon, DCE, 10 United Nations Plaza, Suite 410; San Francisco, CA 94102.

Forell/Elsesser Engineers, an award-winning structural/civil engineering firm, offers outstanding career opportunities to engineers and Cad drafters with all levels of

experience who seek a dynamic, challenging and rewarding work environment (www.forell.com). Work on exciting projects and collaborate with innovative design engineers. We offer an unparalleled salary & benefits package, including employer matched 401(k), pension and incentive compensation plans. Contact: Jim Guthrie, 160 Pine St. #600, San Francisco, CA 94111; fax 415/837-0800 or jim@forell.com.

Interactive Resources Architects & Engineers (www.intres.com <<http://www.intres.com>>) offers competitive compensation & benefits, ongoing career development, interesting projects, and a unique firm culture in a great historic coastal town in the East Bay. We also offer ownership potential. Registered PE minimum, SE preferred. CA/West Coast experience necessary. See our website for more information. Send résumé to 117 Park Place, Point Richmond, CA 94801. Fax: 510/232-5325.

Structural designer position available with a Modesto based structural consulting office. Minimum 3 years experience in designing concrete, CMU, steel and wood structures. Must have good communication skills and be conversant in AutoCAD, SAP 2000, ETABS. Send resume to **Lawder Engineering**, PO Box 3206, Modesto, CA or fax to 209/521-1166.

MKM & Associates of Santa Rosa, CA seeks engineer with minimum 2 years experience with emphasis in timber construction in residential & commercial low-rise buildings. Salary with Bonus considerations dependent on experience & availability to start. Excellent benefits. Please fax résumé to 707/578-7153 or e-mail office1@mkmassociates.com.

Nishkian Menninger seeks experienced registered structural engineer with 10 or more years experience in various types of structures; office buildings, high rises, schools, multiple-tenant residential & other commercial projects, garages and seismic rehab. Résumé & salary requirement to: 510 Howard Street, San Francisco, CA 94105 or e-mail: levon_n@nishkian.com.

RPSE is a 30+ employee Palo Alto firm currently seeking talented EIT's, PE's, & SE's. If you are a dynamic individual with great communication skills and enjoy diverse and challenging projects, we want to talk to you! RPSE offers growth opportu-

nity, competitive salary, great benefits, and a superb working environment. Please fax cover letter & resume to HR, Attn: Sharon at (650) 428-2861 or email to sharonberman@rpse.com. For more details please visit www.rpse.com

Career opportunities in the structural design of prestigious projects await you at **Rutherford & Chekene**, a recognized leader in structural design and seismic engineering. We have a large current workload and a significant backlog. Projects include museums, libraries, research laboratories, and hospitals. Opportunities are available in our San Francisco and Oakland offices for engineers with 3+ years of experience who have enthusiasm for participating in the design of some of the most exciting engineering projects in the Bay Area. CE/SE license and prior building design/detailing experience are a plus. If you wish to learn more, please contact Peter Revelli by phone at 510/740-3200 or E-mail at prevelli@ruthchek.com. Also visit our web site at www.ruthchek.com.

Simpson Gumpertz & Heger Inc. (SGH), founded in 1956 by three M.I.T. professors, is a growing and dynamic consulting engineering firm with \$20M in gross revenues, a staff of 170, and offices in Boston, MA, San Francisco, CA, and Washington, DC. SGH has an international reputation in design, investigation, research and development of structural and building envelope systems, mechanical components, and materials. The variety of our expertise enables the firm to undertake investigative, research, and design projects of a complex and unusual nature. We seek creative, enthusiastic, motivated individuals for positions in all three offices. We offer an excellent compensation and benefits package in a corporate culture based on learning and growth. At SGH you'll gain the strength of our reputation and the creativity of diverse and complex projects. To learn more about SGH, please visit our web site at www.sgh.com. We are an equal opportunity employer and value the diversity of our workforce. Please forward your résumé and letter of interest to Dept. LAS, SGH, 297 Broadway, Arlington, MA 02474; FAX 781/643-2009; e-mail jobs@sgh.com.

Structural Design Engineers seeks staff/project structural engineers with experience in wood, masonry, concrete and steel de-

Continued on Page 6

Continued from Page 5

sign. Min. 4 years experience. MS and C.E. license preferred. Computer analysis skills important. Send résumé to: Structural Design Engineers, 120 Montgomery St., Suite 1410, San Francisco, CA 94104.

Structural Design Group of Santa Rosa, is looking for a motivated engineer looking to get in on the ground floor of a young, fast growing company. Associate position available for a bright, creative individual with experience in educational facilities, low rise commercial, or residential structures. We offer unlimited opportunities for career advancement with ownership potential and an excellent salary/bonus/benefit package. Please fax resume to 707/284-3646 or e-mail: RichB@s-d-g.net

Sverdrup Civil, a major nationwide multi-discipline professional services firm, is seeking a structural engineer with a CE license and a BSCE in Civil Engineering. A Master's degree in structural engineering is preferred. Experience with an IBM PC is desirable. Good communication skills and the ability to work with peers and clients is required. A minimum of 3 years experience desired. Candidate should have an interest in proceeding into management. Our office is conveniently located next to the Pleasant Hill BART Station. Please send résumé to: Personnel Manager, Sverdrup Civil, Inc., 1340 Treat Blvd., Suite 208, Walnut Creek, CA 94596. EOE WKW

Watry Design, Inc. which is located in the San Francisco Bay Area, is in search of highly motivated engineers to join our rapidly growing team. Watry is a full service Architectural/Engineering Firm specializing in the design of large concrete structures, including high-rise hotels and apartments as well as award-winning parking structures. This position offers the right individual an opportunity to play an integral role in the design of multi-million dollar projects with a firm that fosters a cohesive family like environment. The applicant must possess a B.S. in Structural Engineering (or equivalent) with a P.E. or S.E license being highly desirable. A background in the design of concrete and post-tensioned structures, strong computer skills, and excellent communication skills are beneficial. If you would like further information regarding the Watry

Design, Inc., please visit our web site at www.watrydesign.com. Submit all résumés to: Watry Design Inc., 815 Hamilton Street, Redwood City, CA 94063 attn: Julie Snaman or you can send electronically to: jsnaman@watrydesign.com.

Simmons Structural Engineering, an E. Bay firm, seeks senior engineer; our work load includes casinos, ski gondola facilities, golf clubhouses. Min. 10 yrs experience; SE, w/ M.S. preferred, with experience in design, analysis, proj. mgmt., good comm skills req'd. Possible equity position for high achiever. Competitive salary & benefits. Send resume to SSE, 2815 Mitchell Drive, Suite 103, Walnut Creek, CA 94598; fax to 925/938-8472 or email to colleen@simmonsse.com.

CITY OF SAN JOSE, CALIFORNIA, PLAN CHECK ENGINEER

Under direction, performs plan review in accordance with structural engineering principles and Uniform Codes. Requires Bachelor's Degree in Civil Engineering or a closely related field from an accredited college or university, four (4) years of progressively responsible professional civil and structural engineering experience, and registration as a Civil Engineer in California for at least two years. A Master's Degree in Structural Engineering and Plans Examiner ICBO Certification is highly desirable.

Salary Range: \$68,785.60-\$83,824.00 (approximate annually), plus excellent management benefits. Last Date for Filing Application: Open until Filled. For Application and Announcement: Contact Human Resources Department, City of San José, 801 North First Street, Room 207, San José, California 95110-1779, 408/277-4205

CITY OF SAN JOSE, CALIFORNIA SUPERVISING PLAN CHECK ENGINEER

Under general direction, supervises a group on Engineers and/or technical staff in reviewing complex structural/architectural plans and calculations in accordance with structural engineering principles and Uniform Codes. Requires Bachelor's Degree in Civil Engineering or a closely related field from an accredited college or university, six (6) years of progressively responsible professional civil and structural engineering experience, and registra-

tion as a Civil Engineer in California for at least two years. A Master's Degree in Structural Engineering and California registration as a Structural Engineer is highly desirable.

Salary Range: \$83,636.80 – \$101,878.40 (approximate annually), plus excellent management benefits. Last Date for Filing Application: October 26, 2001. For Application and Announcement: Contact Human Resources Department, City of San José, 801 North First Street, Room 207, San José, California 95110-1779, 408/277-4205

OFFICE ENGINEER, Construction Management firm specializing in East Bay Water Resources & Pipeline Projects. 2-5 years experience required. Engineering degree preferred. Call Patty at **The Covello Group, Inc.** 925-933-2300, fax 925/933-0434, or e-mail ppulver@covellogroup.com. EOE

Adamo & Associates Structural Engineers: Our services are in high demand, & so are yours. Do you have exp. working w/ commercial, retail, residential, & institutional projects, utilizing steel, concrete, masonry & wood design? If so, then we are looking for you. We have openings for Jr. & Sr. level designers. Exp. w/ structural analysis programs, BS Civil/ Arch Engineering, 2-4 yrs rel. exp. (training provided). Email resume to: mspindler@adamoassociates.com, 650/938-0144 - fax, 1685 Plymouth St. #150, Mountain View, CA 94043.

Hope Engineering, One of San Diego's leading structural engineering firms, is actively seeking a senior level engineer with a minimum of eight years experience (SE preferred). This position requires extensive experience in steel and concrete design with project management capabilities. Hope Engineering is an award winning building design firm involved in a variety of high end commercial, research and development, university and mixed-use residential projects. We offer excellent advancement opportunities in a dynamic, challenging, and fun work environment. If you are considering relocating to "America's Finest City", please contact us by email: jamundson@hopeengineering.com or visit our website: <http://www.hopeengineering.com>. EOE

Continued from Page 6

MBA Structural Engineers, Inc. seeks drafters and project structural engineers with 3 yrs. min. experience. Tired of the commute? Come join us in downtown Walnut Creek in our growing, professional office environment. We offer a strong compensation package, including flexible hours, bonuses, and full family medical coverage. Send your resume to 1717 N. California Blvd., Suite 2A, Walnut Creek, CA 94596, or fax to 925/933-6140, or e-mail to mbaeng@pacbell.net.

OLMM (www.olmm.com) has immediate opening for a Senior Structural Engineer in its Oakland office. The success of our strategic plan and the diversity of our projects has contributed to continued strong business. We are looking for a consummate structural engineer committed to helping us meet our current obligations and interested in contributing to our future growth. This is a key position and requires MS in structural engineering, SE license, and a minimum 6 years of experience in the analysis and design of major building structures. Good communication skills and ability to work well with others are extremely important. We offer top compensation package and benefits, excellent opportunity for growth, challenging projects, and a great working environment. Resume to sunil@olmm.com.

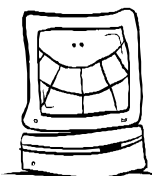
*Job Forum insertion fee:
\$150 up to 450 characters/spaces
\$15 for each 45 characters/spaces thereafter
All job forum ads will be posted on the
SEAONC web site.*

October News

deadline:

Monday, September 10, 2001

**Submit your articles by
e-mail!
SEAONC@ix.netcom.com**



MEETING ANNOUNCEMENT

September Luncheon Meeting

Date: Thursday September 20, 2001

Time: Board Meeting
11:00 am - 12:00 pm

Lunch / Program :
12:00 pm - 1:30 pm

Place: City Club, 155 Sansome Street,
San Francisco

Cost: \$20.00 Business Forum Member
\$35.00 Non- Business Forum
Member

Speakers: Mr. Ashraf Habibullah,
President,
Computers & Structures

Mr. Nick Watry,
Architect/ Engineer,
Watry Design Group

Topic: "Public Relations for Structural
Engineers"

Ashraf will show us, by example, how public relations and volunteering in one's community is good business. Then, Nick Watry will talk about his specific experience volunteering with a High School program called The Three Bridge Project.

Volunteering in your community is good for you, good for your firm, and good for the community.

Ashraf Habibullah, Structural Engineer, is President and CEO of Computers and Structures, Inc, a Berkeley based company specializing in the development of software for Structural and Earthquake Engineering. Mr. Habibullah was awarded the SEAONC Community Involvement Award in recognition of his outstanding commitment to improve the public perception of Structural Engineering through his involvement with the Diablo Ballet.

Nick Watry is the founder of The Watry Design Group, a Redwood City based company specializing in Architecture, Engineering and Parking Planning. Mr. Watry is currently the President for the Engineers Alliance for the Arts and was heavily involved in the Three Bridge Project recently held by EAA.

RSVP: Make reservations by calling the SEAONC office at 415/974-5147 ASAP

**Structural Vibrations in Advanced
Technology Facilities
Hal Amick of Colin Gordon &
Associates
(South Bay Repeat Presentation
October 9th)**

By Jamison Curry, Program Chair

Thanks to our August speaker, Hal Amick of Colin Gordon & Associates. Mr. Amick made a very interesting and informative presentation to the gathered members, concerning floor vibrations. Two things should be especially noted. In an effort to increase participation by structural engineers in the South Bay, SEAONC will begin holding dinner-meeting programs in the South Bay. Mr. Amick's presentation will be repeated on October 9th at Michael's at Shoreline (2960 North Shoreline Blvd.) in Mountain View. Also, Mr. Amick's presentation did (and will again in October) differ from the presentation that he will make at the SEAONC Summer Seminar.

Mr. Amick's presentation was primarily qualitative, giving information on the sources of vibrations and the characteristic responses of floor framing schemes; his presentation for the Seminar will focus on the AISC Design Guide 11: Floor Vibrations Due To Human Activity by Murray, Allen and Ungar.

We have received a fair number of positive comments about the presentation, so thanks again to Hal Amick for his presentation on a topic of timely interest. We encourage you to come to the South Bay presentation, if you missed the San Francisco presentation.

**SEAONC Multimedia
Projector for Rent**

SEAONC's multimedia projector is available for rental! Voting members can rent the projector for only \$100 a day (plus a \$1000 security deposit). Contact the SEAONC office at 415/974-5147 for more details.

Structural Engineering Review Manual 2001 Edition

The most comprehensive SE review manual, Edited by Ben Yousefi, SE and James Son, SE, just got upgraded to the **1997 UBC**. The manual (approx. 600 pages) contains complete problem statements and solutions (except LRFD and bridge design) for the California SE exam years 1990-1995 (six years).

Problem statements and solutions have been extensively modified to reflect the new 1997 UBC provisions for such items as: **Load Combinations, Strength Level Base Shear, Redundancy, Overstrength, Non-structural Components, Anchorage, Concrete Torsion and Shear Wall Design, and Steel Moment Connections per FEMA 350 guidelines.**

The manual, currently in its eighth year of publication, is mainly intended for engineers preparing to take the SE exam. However, it is also a useful reference for a methodical approach to solving many types of practical engineering problems encountered by engineers on a daily basis. Applicable codes and text books are referenced by section and page number for each step of the calculations, which substantially increases the efficiency for users.

In addition a **brand new supplement** (approx. 100 pages) is also available this year covering 18 new problems in all areas. The cost for the main manual is \$175 and for the supplement is \$45; plus applicable taxes, shipping and handling. For more information, or an order form please call BYA publications at 800-566-2906.

DIGITAL CAMERA FOR RENT

SEAONC has a SONY digital camera available for rental! Voting members can rent the camera for only \$25 a day (plus a \$1000 security deposit). Contact the SEAONC office at 415/974-5147 for details.

A Message from the President

Continued from Page 2

An advantage of a national structural engineering certification program will be the uniformity that should be developed, allowing similar professional practice in a majority of States. In any case, it will be a great achievement in the future if NCSEA can develop a uniform national certification program which is backed by practicing engineers, City, County and State jurisdictions, and the general public.

-Jon Kiland
President 2001-02

Senior Structural Engineer

A **Senior Structural Engineer** who possesses a strong technical background and is interested in developing their business skills is encouraged to join this well-established and prestigious multidisciplinary Architecture and Engineering firm in **Fresno, CA**. This firm has a tradition of building long-term working relationships and providing unique, functional, and sensible engineering design solutions to its clients.

The Senior Structural Engineer will manage a team of eight professionals, with a vision of future growth, cultivate client relationships and ensure the high quality of design. Other major responsibilities include developing project management procedures, maintaining firm standards relating to structural drawings and serving as a technical resource for all staff. An ability to foster a positive team environment and develop the structural team through actively mentoring, teaching, promoting career development, recruitment, encouraging individual and group performance, efficiency and profitability.

Qualified candidates will possess a Bachelor's Degree in Structural Engineering, 7 to 10 years of experience, proven leadership abilities and technical knowledge. A structural engineering license is preferred. The Senior Structural Engineer should have a strong sense of, or interest in, managing the business aspects of the Structural Engineering division. Providing an environment that fosters personal and career growth through mentoring and coaching will be essential in this position.

This firm's location in Fresno offers all the leisurely activities that come with a mild, sunny climate along with a vibrant arts community, leading healthcare providers, top schools and a cost of living that is among the lowest in California. A comprehensive compensation and benefits package that is competitive with the industry and includes a profit sharing plan is offered.

Please e-mail resumes to **Geoff Bollert, Recruiter, Hall & Company, geoff@aejob.com** or fax: (360) 697-3744, call 800-583-0379, or apply on-line at **www.AEjob.com**.

Posting for Membership

Member SE

Larry Dunn
Principal, Structural Design Group
Dale Jones
Structural Engineer, Spurgeon Engineering

Member

Gregory Benkovich
Senior Engineer, Ben C. Gerwick
Jacqueline Chan
Project Engineer, Fratessa Forbes Wong Structural Engineers
Ahsanullah Kushkaki
Principal, ACS Consulting Engineers
Derrick Lind
Civil Engineer, Liftech Consultants
Josh Richards
Project Engineer, DASSE Design
Stephanie Wong
Design Engineer, SOHA Engineers

Affiliate

Bridget Hannon
Regional Field Engineer, Hilti

Associate

Tracy Fidell
Structural Designer, Liftech Consultants
David Grod
Division Manager, Executive Recruiter, Lucas Group
Lydia Lai
Engineer, Ben C. Gerwick, Inc.
Mumtaz Nazir
Structural Engineer, ABSG Consulting Inc.
Robert Pekelnicky
Designer, Degenkolb Engineers
Wallant Poon
Staff Engineer, Camp Dresser & McKee
Harel Schwarz
Engineer, Nishkian Menninger
Jingbo Yang
Design Engineer, Nishkian Menninger

Computers and Structures
Repeat Display Ad

upcoming events

SEP

11 September Dinner Meeting

11 AutoCAD Training Courses Begin (see insert)

20 Business Forum Luncheon

OCT

9 South Bay Dinner Meeting

Registration

**Structural Engineers Association of Northern California
September 11th SEAONC PROGRAM**

5:45 PM
General Assembly

6:30 PM
Dinner

7:30 PM
Program

"Vertical Base
Isolated System"

Location:
The City Club
155 Sansome Street,
10th Floor
San Francisco

BART:
Montgomery Street
Exit,
San Francisco

If no label is shown above, or for guests, please fill in the form below.

NAME _____

COMPANY _____

ADDRESS _____

CITY _____ STATE _____ ZIP _____

PHONE _____ FAX _____

RSVP by fax to: 415/764-4915 or phone: 415/974-5147
Make check payable to **SEAONC** and bring with you to the door.

Deadline for pre-registration: 12 noon, Friday, September 7, 2001

Dinner and program reservations are limited to 180. Register early! No cancellations after 12 noon, Friday, September 7, 2001. *No-shows will be invoiced. Tickets not claimed by 6:45 p.m. on the night of the event are subject to being sold. Note: Individuals with outstanding monthly meeting balances are required to pay in advance for a meeting reservation and pay all outstanding monthly meeting invoices.*

COST:	PRE-REGISTERED	LATE REGISTRATION
SEAONC Member	<input type="checkbox"/> \$32	<input type="checkbox"/> \$37
Junior Mbr (34 and under)	<input type="checkbox"/> \$28	<input type="checkbox"/> \$33
Non-Member	<input type="checkbox"/> \$35	<input type="checkbox"/> \$40
Student	<input type="checkbox"/> \$15	<input type="checkbox"/> \$15